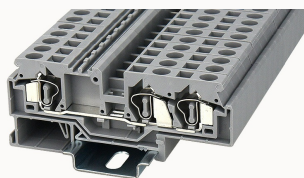


Overview

Product information



WS6-TW-11030000320

Spring-cage type Din-Rail TB, connector method: Spring-cage/plug-in connector, Rated voltage: 800 V, Rated current: 41 A, Number of connectors: 3, Number of potentials: 1, Cross section: 0.2 mm² - 6 mm², AWG: 24 - 10, Width: 8 mm, Color: gray, Mounting type: NS 35/7.5, NS 35/15

Product advantages

- spring-cage connection technology, good anti-vibration performance;
- Use an ordinary flat-blade screwdriver, you can easily wire and take the wire;
- Unique plug-in bridge, high circuit connection efficiency;
- Can be matched with marker strips to avoid incorrect insertion of wires.

Product certification



Technical data

Product drawing

3D model

Overview

Connection method	spring-cage connection
Number of rows	1
number of connections	3
Open-end side panels	Yes
Insulation Materials	PA
Flame retardant grade, in line with UL 94	V0
Insulating material group	I

standard test	IEC60947-7-1
---------------	--------------

Dimension

width	8mm
End plate width	2.5mm
Height	39.5mm
NS 35/7,5 Height	40mm
NS 35/15 Height	47.5mm
length	92mm

Wiring data

Strip length	12~13mm
Conductor cross section solid AWG	24~10
Conductor cross section solid	0.2~6mm ²
Conductor cross section flexible	0.2~6mm ²
2 flexible conductors with a TWIN ferrule	0.5-2.5mm ²

IEC Electrical parameters

Rated voltage (III / 3)	800V
Rated current (III / 3)	41A
Rated surge voltage	8KV

UL Electrical parameters

Rated voltage	600V
Rated current	30A

Environmental conditions

Ambient temperature (operation)	-40 °C ~ 105 °C (depending on derating curve)
Relative humidity (storage/transport)	25%~75%
Ambient temperature (storage / transport)	-25°C~60°C

Mechanical performance test

Mechanical strength	Passed the test
Fixing support	Passed the test
Rotational Pull Test	Passed the test

Electrical performance test

Voltage drop	$\leq 3.2\text{mV}$
Temperature rise test	$\leq 45\text{ K}$

Safety test

Anti-finger touch	Passed the test
-------------------	-----------------

Environmental protection

RoHS	No excessive harmful substances
REACH SVHC	Lead 7439-92-1

Accessories

Marker

Top marker	ZB8 / WB5
Side marker	DEK6
Marker support	DTH5-25×5 / DTH5-25×12
Warning cover	EEA6

Accessories

Slotted screwdriver size (Blade thickness x Width)	0.8×5.5
Adjacent jumper (2P)	WFA6
Alternate jumper (2P)	WFB6
Staggered jumper (2P)	/
End cover	D-WS6-TW

Installation

End clamp	E-WS N / E-PC-1100A
Terminal strip marker support	KLM3-20x8 / KLM3-44x8 / DBE-1 / DBE-2
DIN rail	NS35/7.5-1000-00A(H)

Marking & Installation

Marking strip	ZB8
Marker cards	DBE-1

Accessories

End cover	D-WS6-TW
Bridge	WFA6
End clamp	E-WS
DIN rail	NS35/7.5-1000-00A(H)

Business data

Order number	11030000320
Packing unit	20
Minimum order quantity	20
Products weight (without packaging)	21.106