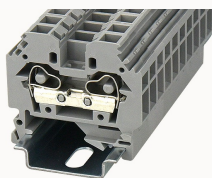


## Overview

### Product information



## WS6-SD-11030000315

Spring-cage type Din-Rail TB, connector method: Spring-cage/plug-in connector, Rated voltage: 800 V, Rated current: 41 A, Number of connectors: 2, Number of potentials: 1, Cross section: 0.2 mm<sup>2</sup> - 6 mm<sup>2</sup>, AWG: 24 - 10, Width: 8 mm, Color: gray, Mounting type: NS 35/7.5, NS 35/15

### Product advantages

- spring-cage connection technology, good anti-vibration performance;
- Use an ordinary flat-blade screwdriver, you can easily wire and take the wire;
- Unique plug-in bridge, high circuit connection efficiency;
- Can be matched with marker strips to avoid incorrect insertion of wires.

### Product certification



## Technical data

### Product drawing

### 3D model

### Overview

Connection method	spring-cage connection
Number of rows	1
number of connections	2
Open-end side panels	Yes
Insulation Materials	PA
Flame retardant grade, in line with UL 94	V0
Insulating material group	I

standard test	IEC60947-7-1
---------------	--------------

#### Dimension

width	8mm
End plate width	4mm
Height	41.6mm
NS 35/7,5 Height	44.5mm
NS 35/15 Height	52mm
length	46mm

#### Wiring data

Strip length	9~10mm
Conductor cross section solid AWG	24~10
Conductor cross section solid	0.2~6mm <sup>2</sup>
Conductor cross section flexible	0.2~6mm <sup>2</sup>
2 flexible conductors with a TWIN ferrule	0.5-2.5mm <sup>2</sup>

#### IEC Electrical parameters

Rated voltage (III / 3)	800V
Rated current (III / 3)	32A
Rated surge voltage	8KV

#### UL Electrical parameters

Rated voltage	600V
Rated current	20A

#### Environmental conditions

Ambient temperature (operation)	-40 °C ~ 105 °C (depending on derating curve)
Relative humidity (storage/transport)	25%~75%
Ambient temperature (storage / transport)	-25°C~60°C

### Mechanical performance test

Mechanical strength	Passed the test
Fixing support	Passed the test
Rotational Pull Test	Passed the test

### Electrical performance test

Voltage drop	$\leq 3.2\text{mV}$
Temperature rise test	$\leq 45\text{ K}$

### Safety test

Anti-finger touch	Passed the test
-------------------	-----------------

### Environmental protection

RoHS	No excessive harmful substances
REACH SVHC	Lead 7439-92-1

### Accessories

#### Marker

Top marker	/
Side marker	ZB8 / WB5
Marker support	/
Warning cover	EEA6

#### Accessories

Slotted screwdriver size (Blade thickness x Width)	0.8x5.5
Adjacent jumper (2P)	WFA6
Alternate jumper (2P)	WFB6
Staggered jumper (2P)	/
End cover	D-WS6-SD

**Installation**

End clamp	E-WS N / E-PC-1100A
Terminal strip marker support	KLM3-20x8 / KLM3-44x8 / DBE-1 / DBE-2
DIN rail	NS35/7.5-1000-00A(H)

**Marking & Installation**

Marking strip	ZB8
Marker cards	DBE-1

**Accessories**

End cover	D-WS6-SD
Bridge	WFA6
End clamp	E-WS
DIN rail	NS35/7.5-1000-00A(H)

**Business data**

Order number	11030000315
Packing unit	50
Minimum order quantity	50
Products weight (without packaging)	11.054