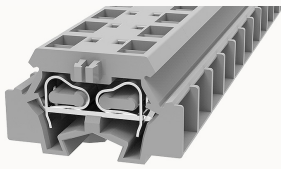


Overview

Product information



WS2.5T-DB-11030000197

Spring-cage type Din-Rail TB, connector method: Spring-cage/plug-in connector, Rated voltage: 800 V, Rated current: 24 A, Number of connectors: 4, Number of potentials: 1, Cross section: 0.2 mm² - 2.5 mm², AWG: 28 - 14, Width: 10 mm, Color: gray, Mounting type: Panel installation

Product advantages

- spring-cage connection technology, good anti-vibration performance;
- Use an ordinary flat-blade screwdriver, you can easily wire and take the wire;
- Panel installation, no need to install on the guide rail;
- Can be matched with marker strips to avoid incorrect insertion of wires.

Product certification



Technical data

Product drawing

3D model

□

Overview

| | |
|---|------------------------|
| Connection method | spring-cage connection |
| Number of rows | 1 |
| number of connections | 4 |
| Open-end side panels | Yes |
| Insulation Materials | PA |
| Flame retardant grade, in line with UL 94 | V0 |
| Insulating material group | I |

| | |
|---------------|--------------|
| standard test | IEC60947-7-1 |
|---------------|--------------|

Dimension

| | |
|-----------------|-------|
| width | 10mm |
| End plate width | 2.5mm |
| Height | 18mm |
| length | 28mm |

Wiring data

| | |
|---|------------------------|
| Strip length | 8~9mm |
| Conductor cross section solid AWG | 28~14 |
| Conductor cross section solid | 0.2~2.5mm ² |
| Conductor cross section flexible | 0.2~2.5mm ² |
| Conductor cross section flexible (ferrule without plastic sleeve) | 0.2~2.5mm ² |
| Conductor cross section flexible (ferrule with plastic sleeve) | 0.2~2.5mm ² |
| 2 flexible conductors with a TWIN ferrule | 0.5mm ² |

IEC Electrical parameters

| | |
|-------------------------|------|
| Rated voltage (III / 3) | 800V |
| Rated current (III / 3) | 24A |
| Rated surge voltage | 8KV |

UL Electrical parameters

| | |
|---------------|------|
| Rated voltage | 300V |
| Rated current | 15A |

Environmental conditions

| | |
|---------------------------------------|---|
| Ambient temperature (operation) | -40 °C ~ 105 °C (depending on derating curve) |
| Relative humidity (storage/transport) | 25%~75% |

| | |
|---|------------|
| Ambient temperature (storage / transport) | -25°C~60°C |
|---|------------|

Mechanical performance test

| | |
|----------------------|-----------------|
| Mechanical strength | Passed the test |
| Fixing support | Passed the test |
| Rotational Pull Test | Passed the test |

Electrical performance test

| | |
|-----------------------|--------|
| Voltage drop | ≤3.2mV |
| Temperature rise test | ≤45 K |

Safety test

| | |
|-------------------|-----------------|
| Anti-finger touch | Passed the test |
|-------------------|-----------------|

Environmental protection

| | |
|------------|---------------------------------|
| RoHS | No excessive harmful substances |
| REACH SVHC | Lead 7439-92-1 |

Accessories

Marker

| | |
|----------------|------|
| Top marker | / |
| Side marker | DEK5 |
| Marker support | / |
| Warning cover | / |

Accessories

| | |
|--|---------|
| Slotted screwdriver size (Blade thickness x Width) | 0.5×3.5 |
| Adjacent jumper (2P) | / |
| Alternate jumper (2P) | / |
| Staggered jumper (2P) | / |

| | |
|-----------|------------|
| End cover | D-WS2.5-DB |
|-----------|------------|

Installation

| | |
|-------------------------------|---------------------------------------|
| DIN rail mounting adapter | WHH-WS1.5-DB |
| End clamp | E-WS N / E-PC-1100A |
| Terminal strip marker support | KLM3-20x8 / KLM3-44x8 / DBE-1 / DBE-2 |
| DIN rail | NS35/7.5-1000-00A(H) |

Marking & Installation

| | |
|---------------|------|
| Marking strip | DEK5 |
|---------------|------|

Accessories

| | |
|--------------|--------------|
| End cover | D-WS2.5-DB |
| Bridge | WFE-2.5 |
| Rail adapter | WHH-WS1.5-DB |

Business data

| | |
|-------------------------------------|-------------|
| Order number | 11030000197 |
| Packing unit | 100 |
| Minimum order quantity | 100 |
| Products weight (without packaging) | 4.3 |