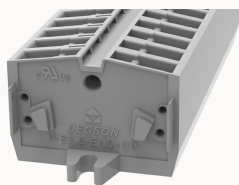


## Overview

### Product information



## WS2.5-END-CO-11030000156

Spring-cage type Din-Rail TB, connector method: Spring-cage/plug-in connector, Rated voltage: 800 V, Rated current: 24 A, Number of connectors: 2, Number of potentials: 1, Cross section: 0.2 mm<sup>2</sup> - 2.5 mm<sup>2</sup>, AWG: 28 - 12, Width: 6 mm, Color: gray, Mounting type: Panel installation

### Product advantages

- spring-cage connection technology, good anti-vibration performance;
- Use an ordinary flat-blade screwdriver, you can easily wire and take the wire;
- Panel installation, no need to install on the guide rail;
- Can be matched with marker strips to avoid incorrect insertion of wires.

### Product certification



## Technical data

### Product drawing

### 3D model

### Overview

|   |                        |
|---|------------------------|
| Connection method                         | spring-cage connection |
| Number of rows                            | 1                      |
| number of connections                     | 2                      |
| Open-end side panels                      | Yes                    |
| Insulation Materials                      | PA                     |
| Flame retardant grade, in line with UL 94 | V0                     |
| Insulating material group                 | I                      |

|               |              |
|---------------|--------------|
| standard test | IEC60947-7-1 |
|---------------|--------------|

#### Dimension

|                 |         |
|-----------------|---------|
| width           | 6mm     |
| End plate width | 4mm     |
| Height          | 22.00mm |
| length          | 32mm    |

#### Wiring data

|   |                        |
|---|------------------------|
| Strip length  | 8~9mm                  |
| Conductor cross section solid AWG                                 | 28~14                  |
| Conductor cross section solid                                     | 0.2~2.5mm <sup>2</sup> |
| Conductor cross section flexible                                  | 0.2~2.5mm <sup>2</sup> |
| Conductor cross section flexible (ferrule without plastic sleeve) | 0.2~2.5mm <sup>2</sup> |
| Conductor cross section flexible (ferrule with plastic sleeve)    | 0.2~2.5mm <sup>2</sup> |
| 2 flexible conductors with a TWIN ferrule                         | 0.5mm <sup>2</sup>     |

#### IEC Electrical parameters

|                         |      |
|-------------------------|------|
| Rated voltage (III / 3) | 800V |
| Rated current (III / 3) | 24A  |
| Rated surge voltage     | 8KV  |

#### UL Electrical parameters

|               |      |
|---------------|------|
| Rated voltage | 600V |
| Rated current | 20A  |

#### Environmental conditions

|                                       |   |
|---------------------------------------|---|
| Ambient temperature (operation)       | -40 °C ~ 105 °C (depending on derating curve) |
| Relative humidity (storage/transport) | 25%~75%                                       |

|   |            |
|---|------------|
| Ambient temperature (storage / transport) | -25°C~60°C |
|---|------------|

**Mechanical performance test**

|                      |                 |
|----------------------|-----------------|
| Mechanical strength  | Passed the test |
| Fixing support       | Passed the test |
| Rotational Pull Test | Passed the test |

**Electrical performance test**

|                       |        |
|-----------------------|--------|
| Voltage drop          | ≤3.2mV |
| Temperature rise test | ≤45 K  |

**Safety test**

|                   |                 |
|-------------------|-----------------|
| Anti-finger touch | Passed the test |
|-------------------|-----------------|

**Environmental protection**

|            |                                 |
|------------|---------------------------------|
| RoHS       | No excessive harmful substances |
| REACH SVHC | Lead 7439-92-1                  |

**Accessories**

**Marker**

|                |     |
|----------------|-----|
| Top marker     | ZW5 |
| Side marker    | /   |
| Marker support | /   |
| Warning cover  | /   |

**Accessories**

|  |         |
|--|---------|
| Slotted screwdriver size (Blade thickness x Width) | 0.5×3.5 |
| Adjacent jumper (2P)                               | /       |
| Alternate jumper (2P)                              | /       |
| Staggered jumper (2P)                              | /       |

|           |                |
|-----------|----------------|
| End cover | D-WS2.5-MID-CO |
|-----------|----------------|

**Installation**

|                               |                                       |
|-------------------------------|---------------------------------------|
| End clamp                     | E-WS N / E-PC-1100A                   |
| Terminal strip marker support | KLM3-20x8 / KLM3-44x8 / DBE-1 / DBE-2 |
| DIN rail                      | NS35/7.5-1000-00A(H)                  |

**Marking & Installation**

|               |     |
|---------------|-----|
| Marking strip | ZW5 |
|---------------|-----|

**Accessories**

|           |                |
|-----------|----------------|
| End cover | D-WS2.5-END-CO |
| Bridge    | WFE-2.5        |

**Business data**

|                                     |             |
|-------------------------------------|-------------|
| Order number                        | 11030000156 |
| Packing unit                        | 50          |
| Minimum order quantity              | 50          |
| Products weight (without packaging) | 3.712       |