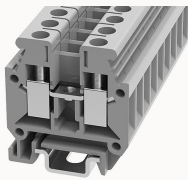


## Overview

### Product information



## PCMB4-11010000143

Screw type Din-Rail TB, connector method: Screw/plug-in connector, Rated voltage: 500 V, Rated current: 32 A, Number of connectors: 2, Number of potentials: 1, Cross section: 0.2 mm<sup>2</sup> - 4 mm<sup>2</sup>, AWG: 26 - 10, Width: 6.2 mm, Color: gray, Mounting type: NS 35/7.5, NS 35/15

### Product advantages

- Screw connection technology, reliable connection;
- Equipped with fixed parts and bridge parts, circuit connection test is more flexible;
- Copper alloy material, good corrosion resistance;
- Can be matched with marker strips to avoid incorrect insertion of wires.

### Product certification



## Technical data

### Product drawing

### 3D model

□

### Overview

Number of rows	1
number of connections	2
Open-end side panels	Yes
Insulation Materials	PA
Flame retardant grade, in line with UL 94	V0
Insulating material group	I
standard test	IEC60947-7-1
Connection method	screw connection

**Dimension**

width	6.2mm
End plate width	1mm
Height	31.2mm
NS 35/7,5 Height	33.7mm
length	28mm

**Wiring data**

Strip length	7~8mm
Conductor cross section solid AWG	26~10
Conductor cross section solid	0.2~4mm <sup>2</sup>
Conductor cross section flexible	0.2~4mm <sup>2</sup>
Conductor cross section flexible (ferrule without plastic sleeve)	0.2~4mm <sup>2</sup>
Conductor cross section flexible (ferrule with plastic sleeve)	0.2~2.5mm <sup>2</sup>
2 flexible conductors with a TWIN ferrule	0.5~1.5mm <sup>2</sup>
Screw type	Slotted screw
screw thread	M3
Tightening torque	0.5N.m

**IEC Electrical parameters**

Rated voltage (III / 3)	500V
Rated current (III / 3)	32A
Rated surge voltage	6KV

**UL Electrical parameters**

Rated voltage	300V
Rated current	30A

## Environmental conditions

Ambient temperature (operation)	-40 °C ~ 105 °C (depending on derating curve)
Relative humidity (storage/transport)	25%~75%
Ambient temperature (storage / transport)	-25°C~60°C

## Mechanical performance test

Mechanical strength	Passed the test
Fixing support	Passed the test
Rotational Pull Test	Passed the test

## Electrical performance test

Voltage drop	≤3.2mV
Temperature rise test	≤45 K

## Safety test

Anti-finger touch	Passed the test
-------------------	-----------------

## Environmental protection

RoHS	No excessive harmful substances
REACH SVHC	Lead 7439-92-1

## Accessories

### Accessories

Slotted screwdriver size (Blade thickness x Width)	0.6×3.5
Fixed bridge	FBIX-6
Insertion bridge	EB2-6 / EB3-6 / EB10-6
End cover	D-PCMB2.5
Separating disk	TS-KK3
Partition plate	/

**Marker**

Top marker	/
Marker	ZB6
Marker support	/

**Installation**

End clamp	E-WS N / E-PC-1100A
Terminal strip marker support	KLM3-20x8 / KLM3-44x8 / DLM2 / DBE-1 / DBE-2
DIN rail	NS35/7.5 & NS35/15

**Marking & Installation**

Marking strip	ZB6
Marker cards	DBE-1

**Accessories**

End cover	D-PCMB2.5
Grouping Partition plate	TS-KK3
Bridge	FBRIXX-6
End clamp	E-WS
DIN rail	NS15-1000-00A(H)

**Business data**

Order number	11010000143
Packing unit	100
Minimum order quantity	100
Products weight (without packaging)	5.590