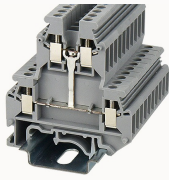


Overview

Product information



PCKK2.5-PV-11010000124

Screw type Din-Rail TB, connector method: Screw/plug-in connector, Rated voltage: 500 V, Rated current: 24 A, Number of connectors: 4, Number of potentials: 1, Cross section: 0.2 mm² - 2.5 mm², AWG: 24 - 12, Width: 5.2 mm, Color: gray, Mounting type: NS 35/7.5, NS 35/15

Product advantages

- Screw connection technology, reliable connection;
- Equipped with fixed parts and bridge parts, circuit connection test is more flexible;
- Copper alloy material, good corrosion resistance;
- Can be matched with marker strips to avoid incorrect insertion of wires.

Product certification



Technical data

Product drawing

3D model

□

Overview

| | |
|---|------------------|
| Number of rows | 2 |
| number of connections | 4 |
| Open-end side panels | Yes |
| Insulation Materials | PA |
| Flame retardant grade, in line with UL 94 | V0 |
| Insulating material group | I |
| standard test | IEC60947-7-1 |
| Connection method | screw connection |

Dimension

| | |
|------------------|---------|
| width | 5.2mm |
| End plate width | 2.5mm |
| Height | 60.7mm |
| NS 35/7,5 Height | 61.95mm |
| NS 35/15 Height | 69.45mm |
| length | 56mm |

Wiring data

| | |
|---|-------------------------|
| Strip length | 8~9mm |
| Conductor cross section solid AWG | 24~12 |
| Conductor cross section solid | 0.2~2.5mm ² |
| Conductor cross section flexible | 0.2~2.5mm ² |
| Conductor cross section flexible (ferrule without plastic sleeve) | 0.2-2.5mm ² |
| 2 flexible conductors with a TWIN ferrule | 0.5-0.75mm ² |
| Screw type | Slotted screw |
| screw thread | M3 |
| Tightening torque | 0.5N.m |

IEC Electrical parameters

| | |
|-------------------------|------|
| Rated voltage (III / 3) | 500V |
| Rated current (III / 3) | 24A |
| Rated surge voltage | 6KV |

UL Electrical parameters

| | |
|---------------|------|
| Rated voltage | 300V |
| Rated current | 20A |

Environmental conditions

| | |
|---|---|
| Ambient temperature (operation) | -40 °C ~ 105 °C (depending on derating curve) |
| Relative humidity (storage/transport) | 25%~75% |
| Ambient temperature (storage / transport) | -25°C~60°C |

Mechanical performance test

| | |
|----------------------|-----------------|
| Mechanical strength | Passed the test |
| Fixing support | Passed the test |
| Rotational Pull Test | Passed the test |

Electrical performance test

| | |
|-----------------------|--------|
| Voltage drop | ≤3.2mV |
| Temperature rise test | ≤45 K |

Safety test

| | |
|-------------------|-----------------|
| Anti-finger touch | Passed the test |
|-------------------|-----------------|

Environmental protection

| | |
|------------|---------------------------------|
| RoHS | No excessive harmful substances |
| REACH SVHC | Lead 7439-92-1 |

Accessories

Accessories

| | |
|--|------------------------|
| Slotted screwdriver size (Blade thickness x Width) | 0.6×3.5 |
| Fixed bridge | FBRIXX-5 |
| Insertion bridge | EB2-5 / EB3-5 / EB10-5 |
| End cover | D-PCKK2.5 |
| Separating disk | TS-KK3 |
| Partition plate | / |
| Compensation plate | DP-PCKK2.5 |

Marker

| | |
|----------------|-----|
| Top marker | / |
| Marker | ZB5 |
| Marker support | / |

Installation

| | |
|-------------------------------|--|
| End clamp | E-WS N / E-PC-1100A |
| Terminal strip marker support | KLM3-20x8 / KLM3-44x8 / DLM2 / DBE-1 / DBE-2 |
| DIN rail | NS35/7.5 & NS35/15 |

Marking & Installation

| | |
|---------------|-------|
| Marking strip | ZB5 |
| Marker cards | DBE-1 |

Accessories

| | |
|--------------------------|----------------------|
| End cover | D-PCKK2.5 |
| Compensation plate | DP-PCKK2.5 |
| Grouping Partition plate | TS-KK3 |
| Bridge | FBRIXX-5 |
| End clamp | E-WS |
| DIN rail | NS35/7.5-1000-00A(H) |

Business data

| | |
|-------------------------------------|-------------|
| Order number | 11010000124 |
| Packing unit | 50 |
| Minimum order quantity | 50 |
| Products weight (without packaging) | 12.541 |

