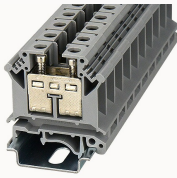


Overview

Product information



PCIK16-11010000121

Screw type Din-Rail TB, connector method: Screw/plug-in connector, Rated voltage: 1000 V, Rated current: 76 A, Number of connectors: 2, Number of potentials: 1, Cross section: 1.0 mm² - 16 mm², AWG: 12 - 4, Width: 12.2 mm, Color: gray, Mounting type: NS 35/7.5, NS 35/15

Product advantages

- Screw connection technology, reliable connection;
- Equipped with fixed parts and bridge parts, circuit connection test is more flexible;
- Copper alloy material, good corrosion resistance;
- Can be matched with marker strips to avoid incorrect insertion of wires.

Product certification



Technical data

Product drawing

3D model

□

Overview

| | |
|---|------------------|
| Number of rows | 1 |
| number of connections | 2 |
| Open-end side panels | Yes |
| Insulation Materials | PA |
| Flame retardant grade, in line with UL 94 | V0 |
| Insulating material group | I |
| standard test | IEC60947-7-1 |
| Connection method | screw connection |

Dimension

| | |
|------------------|---------|
| width | 12.2mm |
| End plate width | 1.6mm |
| Height | 46mm |
| NS 35/7,5 Height | 47.25mm |
| NS 35/15 Height | 54.75mm |
| length | 42.5mm |

Wiring data

| | |
|---|------------------------|
| Strip length | 11~12mm |
| Conductor cross section solid AWG | 12~4 |
| Conductor cross section solid | 1~16mm ² |
| Conductor cross section flexible | 1.0~16mm ² |
| Conductor cross section flexible (ferrule without plastic sleeve) | 1-16mm ² |
| Conductor cross section flexible (ferrule with plastic sleeve) | 1-16mm ² |
| 2 flexible conductors with a TWIN ferrule | 0.75-10mm ² |
| Screw type | Slotted screw |
| screw thread | M5 |
| Tightening torque | 2.0N.m |

IEC Electrical parameters

| | |
|-------------------------|-------|
| Rated voltage (III / 3) | 1000V |
| Rated current (III / 3) | 76A |
| Rated surge voltage | 8KV |

UL Electrical parameters

| | |
|---------------|------|
| Rated voltage | 600V |
|---------------|------|

| | |
|---------------|-----|
| Rated current | 85A |
|---------------|-----|

Environmental conditions

| | |
|---|---|
| Ambient temperature (operation) | -40 °C ~ 105 °C (depending on derating curve) |
| Relative humidity (storage/transport) | 25%~75% |
| Ambient temperature (storage / transport) | -25°C~60°C |

Mechanical performance test

| | |
|----------------------|-----------------|
| Mechanical strength | Passed the test |
| Fixing support | Passed the test |
| Rotational Pull Test | Passed the test |

Electrical performance test

| | |
|-----------------------|--------|
| Voltage drop | ≤3.2mV |
| Temperature rise test | ≤45 K |

Safety test

| | |
|-------------------|-----------------|
| Anti-finger touch | Passed the test |
|-------------------|-----------------|

Environmental protection

| | |
|------------|---------------------------------|
| RoHS | No excessive harmful substances |
| REACH SVHC | Lead 7439-92-1 |

Accessories

Accessories

| | |
|--|---------------------------|
| Slotted screwdriver size (Blade thickness x Width) | 1×4 |
| Fixed bridge | FBIX-12 |
| Insertion bridge | EB2-12 / EB3-12 / EB10-12 |
| End cover | D-PC16-105A(H) |
| Separating disk | / |

| | |
|-----------------|---|
| Partition plate | / |
|-----------------|---|

Marker

| | |
|----------------|------|
| Top marker | / |
| Marker | ZT12 |
| Marker support | / |

Installation

| | |
|-------------------------------|--|
| End clamp | E-WS N / E-PC-1100A |
| Terminal strip marker support | KLM3-20x8 / KLM3-44x8 / DLM2 / DBE-1 / DBE-2 |
| DIN rail | NS35/7.5 & NS35/15 |

Marking & Installation

| | |
|---------------|-------|
| Marking strip | ZB10 |
| Marker cards | DBE-1 |

Accessories

| | |
|-----------|----------------------|
| End cover | D-PCIK16 |
| Bridge | FBIXX-12 |
| End clamp | E-WS |
| DIN rail | NS35/7.5-1000-00A(H) |

Business data

| | |
|-------------------------------------|-------------|
| Order number | 11010000121 |
| Packing unit | 50 |
| Minimum order quantity | 50 |
| Products weight (without packaging) | 13.953 |