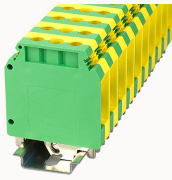


Overview

Product information



PC35-PE-11010000067

Screw type Din-Rail TB, connector method: Screw/plug-in connector, Number of connectors: 2, Number of potentials: 1, Cross section: 0.2 mm² - 35 mm², AWG: 18 - 1/0, Width: 15.2 mm, Color: green-yellow, Mounting type: NS 35/7.5, NS 35/15

Product advantages

- Screw connection technology, reliable connection;
- Grounding structure, protection circuit;
- Copper alloy material, good corrosion resistance;
- Can be matched with marker strips to avoid incorrect insertion of wires.

Product certification



Technical data

Product drawing

3D model

□

Overview

Number of rows	1
number of connections	2
Open-end side panels	no
Insulation Materials	PA
Flame retardant grade, in line with UL 94	V0
Insulating material group	I
standard test	IEC60947-7-2
Connection method	screw connection

Dimension

width	15.2mm
End plate width	/
Height	61.8mm
NS 35/7,5 Height	63.25mm
NS 35/15 Height	70.75mm
length	50mm

Wiring data

Strip length	18~19mm
Conductor cross section solid AWG	18~1/0
Conductor cross section solid	0.2~35mm ²
Conductor cross section flexible	0.2~35mm ²
2 flexible conductors with a TWIN ferrule	0.75-10mm ²
Screw type	Slotted screw
screw thread	M6
Tightening torque	2.5N.m

IEC Electrical parameters

Rated voltage (III / 3)	/
Rated current (III / 3)	/

IEC Electrical parameters

Rated surge voltage	8KV
---------------------	-----

UL Electrical parameters

Rated voltage	/
Rated current	/

Environmental conditions

Ambient temperature (operation)	-40 °C ~ 105 °C (depending on derating curve)
Relative humidity (storage/transport)	25%~75%
Ambient temperature (storage / transport)	-25°C~60°C

Mechanical performance test

Mechanical strength	Passed the test
Fixing support	Passed the test
Rotational Pull Test	Passed the test

Electrical performance test

Voltage drop	≤3.2mV
Temperature rise test	≤45 K

Safety test

Anti-finger touch	Passed the test
-------------------	-----------------

Environmental protection

RoHS	No excessive harmful substances
REACH SVHC	Lead 7439-92-1

Accessories

Accessories

Slotted screwdriver size (Blade thickness x Width)	1×6.5
Fixed bridge	/
Insertion bridge	EB2-15 / EB3-15 / EB10-15
End cover	/
Separating disk	/
Partition plate	/

Marker

Top marker	/
Marker	ZT12
Marker support	/

Installation

End clamp	E-WS N / E-PC-1100A
Terminal strip marker support	KLM3-20x8 / KLM3-44x8 / DLM2 / DBE-1 / DBE-2
DIN rail	NS35/7.5 & NS35/15

Marking & Installation

Marking strip	ZB10
Marker cards	DBE-1

Accessories

Bridge	EBXX-15
End clamp	E-WS
DIN rail	NS35/7.5-1000-00A(H)

Business data

Order number	11010000067
Packing unit	20
Minimum order quantity	20
Products weight (without packaging)	85.72