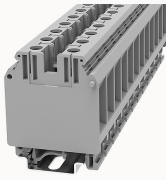


## Overview

### Product information



## PC35-11010000059

Screw type Din-Rail TB, connector method: Screw/plug-in connector, Rated voltage: 1000 V, Rated current: 125 A, Number of connectors: 2, Number of potentials: 1, Cross section: 18 mm<sup>2</sup> - 1/0 mm<sup>2</sup>, AWG: 28 - 12, Width: 15.2 mm, Color: gray, Mounting type: NS 35/7.5, NS 35/15

### Product advantages

- Screw connection technology, reliable connection;
- Equipped with fixed parts and bridge parts, circuit connection test is more flexible;
- Copper alloy material, good corrosion resistance;
- Can be matched with marker strips to avoid incorrect insertion of wires.

### Product certification



## Technical data

### Product drawing

### 3D model

□

### Overview

Number of rows	1
number of connections	2
Open-end side panels	no
Insulation Materials	PA
Flame retardant grade, in line with UL 94	V0
Insulating material group	I
standard test	IEC60947-7-1
Connection method	screw connection

**Dimension**

width	15.2mm
End plate width	/
Height	62mm
NS 35/7,5 Height	63.25mm
NS 35/15 Height	70.75mm
length	50mm

**Wiring data**

Strip length	15~16mm
Conductor cross section solid AWG	18~1/0
Conductor cross section solid	0.2~35mm <sup>2</sup>
Conductor cross section flexible	0.2~35mm <sup>2</sup>
2 flexible conductors with a TWIN ferrule	0.75-10mm <sup>2</sup>
Screw type	Slotted screw
screw thread	M6
Tightening torque	2.5N.m

**IEC Electrical parameters**

Rated voltage (III / 3)	1000V
Rated current (III / 3)	125A
Rated surge voltage	8KV

**UL Electrical parameters**

Rated voltage	600V
Rated current	150A

**Environmental conditions**

Ambient temperature (operation)	-40 °C ~ 105 °C (depending on derating curve)
---------------------------------	---

Relative humidity (storage/transport)	25%~75%
Ambient temperature (storage / transport)	-25℃~60℃

#### Mechanical performance test

Mechanical strength	Passed the test
Fixing support	Passed the test
Rotational Pull Test	Passed the test

#### Electrical performance test

Voltage drop	≤3.2mV
Temperature rise test	≤45 K

#### Safety test

Anti-finger touch	Passed the test
-------------------	-----------------

#### Environmental protection

RoHS	No excessive harmful substances
REACH SVHC	Lead 7439-92-1

### Accessories

#### Accessories

Slotted screwdriver size (Blade thickness x Width)	1×6.5
Fixed bridge	FBIXX-15
Insertion bridge	EB2-15 / EB3-15 / EB10-15
End cover	/
Separating disk	TS-K
Partition plate	/

#### Marker

Top marker	/
------------	---

Marker	ZT12
Marker support	/

#### Installation

End clamp	E-WS N / E-PC-1100A
Terminal strip marker support	KLM3-20x8 / KLM3-44x8 / DLM2 / DBE-1 / DBE-2
DIN rail	NS35/7.5 & NS35/15

#### Marking & Installation

Marking strip	ZB10
Marker cards	DBE-1

#### Accessories

Bridge	FBIX-15
End clamp	E-WS
DIN rail	NS35/7.5-1000-00A(H)

#### Business data

Order number	11010000059
Packing unit	30
Minimum order quantity	30
Products weight (without packaging)	54.815