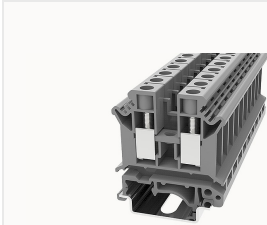


Overview

Product information



PC10-11010000001

Screw type Din-Rail TB, connector method: Screw/plug-in connector, Rated voltage: 800 V, Rated current: 57 A, Number of connectors: 2, Number of potentials: 1, Cross section: 0.2 mm² - 10 mm², AWG: 20 - 6, Width: 10.2 mm, Color: gray, Mounting type: NS 35/7.5, NS 35/15

Product advantages

- Screw connection technology, reliable connection;
- Equipped with fixed parts and bridge parts, circuit connection test is more flexible;
- Copper alloy material, good corrosion resistance;
- Can be matched with marker strips to avoid incorrect insertion of wires.

Product certification



Technical data

Product drawing

3D model

□

Overview

Number of rows	1
number of connections	2
Open-end side panels	Yes
Insulation Materials	PA
Flame retardant grade, in line with UL 94	V0
Insulating material group	I
standard test	IEC60947-7-1
Connection method	screw connection

Dimension

width	10.2mm
End plate width	1.6mm
Height	46mm
NS 35/7,5 Height	47.25mm
NS 35/15 Height	54.75mm
length	42.5mm

Wiring data

Strip length	9~10mm
Conductor cross section solid AWG	20~6
Conductor cross section solid	0.2~10mm ²
Conductor cross section flexible	0.2~10mm ²
Screw type	Slotted screw
screw thread	M4
Tightening torque	1.2N.m

IEC Electrical parameters

Rated voltage (III / 3)	800V
Rated current (III / 3)	57A
Rated surge voltage	8KV

UL Electrical parameters

Rated voltage	600V
Rated current	30A

Environmental conditions

Ambient temperature (operation)	-40 °C ~ 105 °C (depending on derating curve)
Relative humidity (storage/transport)	25%~75%

Ambient temperature (storage / transport)	-25°C~60°C
---	------------

Mechanical performance test

Mechanical strength	Passed the test
Fixing support	Passed the test
Rotational Pull Test	Passed the test

Electrical performance test

Voltage drop	≤3.2mV
Temperature rise test	≤45 K

Safety test

Anti-finger touch	Passed the test
-------------------	-----------------

Environmental protection

RoHS	No excessive harmful substances
REACH SVHC	Lead 7439-92-1

Accessories

Accessories

Slotted screwdriver size (Blade thickness x Width)	1×4
Fixed bridge	FBIX-10
Insertion bridge	EB2-10 / EB3-10 / EB10-10
End cover	D-PC2.5
Separating disk	/
Partition plate	ATP-PC

Marker

Top marker	/
Marker	ZB10

Marker support	/
----------------	---

Installation

End clamp	E-WS N / E-PC-1100A
Terminal strip marker support	KLM3-20x8 / KLM3-44x8 / DLM2 / DBE-1 / DBE-2
DIN rail	NS35/7.5 & NS35/15

Marking & Installation

Marking strip	ZB10
Marker cards	DBE-1

Accessories

End cover	D-PC2.5
Grouping Partition plate	TS-K
Partition plate	ATP-PC
Bridge	FBIX-10
End clamp	E-WS
DIN rail	NS35/7.5-1000-00A(H)

Business data

Order number	11010000001
Packing unit	50
Minimum order quantity	50
Products weight (without packaging)	16.398