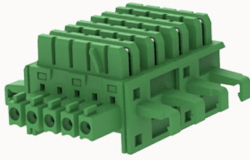


Overview

Product information


FBUS22.5-05P-10020001619

DIN rail bus connector, Number of potentials: 5, pitch: 3.81 mm, Color: light gray, Contact surface : gold,Contact point gold plating,bus connector used to connect electronic module housing. Color: light gray.Compatible housing:FMEH-04P.

Product advantages

- Modular design
- Multiple connection technologies optional, signal, data,and power transmission can be realized
- bus connector is optional
- Various personalized solutions can be achieved according to customer needs

Product certification

Technical data

Product drawing

3D model

Item properties

Pitch	3.81mm
Number of potentials	5
Type of installation(din rail \ panel \ PCB soldering)	din rail
Pluggable or not	Yes
Number of rows	1

Material data

Environmental items(Compliant with REACH/RoHS)	Yes
Conductor material (copper / copper alloy)	Copper alloy
Contact point metal surface(conductor contact with wire)	gold

Contact zone metal surface(insert&pullout)	gold
Shell color	light gray
Insulation Materials (main class)	PA66
Insulating material group	I
Flammability rating	V0

Mechanical tests

Test standard (standard no.)	UL1059
------------------------------	--------

Durability test

Insert / pull out cycle	50
-------------------------	----

Electrical parameters

Rated current(B) UL	7A
	150V

Environmental data

Ambient temperature (operation)	-40℃ ~ +105℃
Ambient temperature (storage / transport)	-40℃ ~ +70℃

Accessories

Accessories

--	--

Business data

Order number	10020001619
Packing unit	60
Minimum order quantity	60
Products weight (without packaging)	4.58

