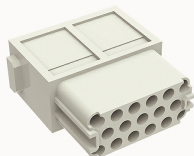


Overview

Product information



DMD-017-FC-21020000071

Heavy-duty insert, Number of contacts: 17, Dimension: 1 module Spaces, Rated voltage : 160V, Rated current: 10A, Female insert, Crimping connector

Product advantages

- Crimping connection technology, applicable to a wide range of wire specifications ;
- Modular products, easy to assemble and maintain .

Product certification



Technical data

Product drawing

3D model

□

Marking

classification	Insert
Series	DM

versions

Connection method	Crimping connection
Female/Male	Female
Dimension	1 module
Number of positions	17
PE Contacts	No

Material characteristics

Material (insert)	Polycarbonate (PC)
Material (Contact)	Copper alloy
Surface (Contact)	Silver plated/gold plated
Flammability rating	V-0
color	Grey/White (RAL 7032)
RoHS	Comply with RoHS exemptions

Electrical parameters

Rated current	10A
	160V
Rated pulse voltage	2.5KV
Pollution level	3
On the basis of UL /CSARated current	600V
Insulation resistance	$\geq 10000M\Omega$
Contact resistance	$\leq 3m\Omega$
Temperature range	-40°C~+125°C
working life-mating cycles	≥ 500 time
Conductor cross sections (mm ²)	0.14-2.5mm ²
Conductor cross sections(AWG)	26-14AWG

Standards

Connection meets standards	DIN EN 60664 DIN EN 61984
----------------------------	---------------------------

Accessories

Accessories

Crimping tool Removal tool	/
----------------------------	---

Business data

Order number	2102000071
Packing unit	100
Minimum order quantity	5
Products weight (without packaging)	9.73