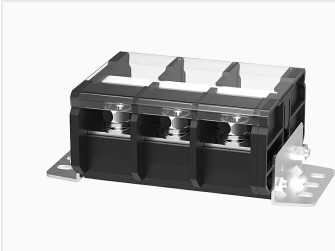


Overview

Product information

**DGR150-20A(H)-12010000098**

Transfer barrier terminal blocks, Rated current: 155A. Rated voltage (UL) : 600V, Cross section: 20~2/0AWG, pitch: 27mm, Color: black, Contact surface: Tin

Product advantages

- Screw connection for worldwide use
- Fence type wiring structure, stable and reliable connection
- Provide the cabinet and panel electrical transfer connections

Product certification



Technical data

Product drawing

3D model

□

Connection capacity

AWG	20~2/0AWG
-----	-----------

Electrical parameters UL

Rated voltage (B)	600V
Rated voltage (C)	600V
Rated voltage (D)	600V
Rated current (B)	150A
Rated current (C)	150A

Electrical parameters IEC

Rated current	1000V
---------------	-------

Item properties

Type of installation	panel
Pin arrangement	Double-row in a straight line
Connection method	Screw connection
Screwdriver	Phillips screwdriver
screw thread	M8
Pitch	27mm
Number of potentials	3
Pluggable or not	no
Number of rows	1

Material data

Environmental items	Compliant with REACH/RoHS
Contact material	Copper alloy
Contact point metal surface	Nickel plating
Insulation Materials	PC
Insulating material group	IIIa
Flammability rating	UL94V-0

Mechanical tests

Test Specification	UL1059
--------------------	--------

Environmental data

Ambient temperature (operation)	-40°C~125°C
---------------------------------	-------------

Accessories

Accessories

Business data

Order number	12010000098
Packing unit	2
Minimum order quantity	/
Products weight (without packaging)	266.6