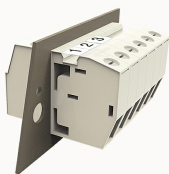


## Overview

## Product information


**DGH10-10090000002**

Through-wall terminal blocks, Rated current: 76A, Rated voltage (III/3) : 500V, Width: 10.1mm, Color: gray, Contact surface : Tin

## Product advantages

- Screw connection technology, safe and reliable
- Through-wall installation, free positioning

## Product certification

## Technical data

## Product drawing

## 3D model

□

## Connection capacity

Conductor cross section solid	0.5~16mm <sup>2</sup>
Conductor cross section flexible	0.5~16mm <sup>2</sup>
AWG	24~6AWG
Torque	1.2N.m
Strip length	10mm

## Electrical parameters UL

Rated voltage (B)	300V
Rated voltage (D)	300V
Rated current (B)	65A
Rated current (D)	10A

## Electrical parameters IEC

Rated current(III/3)	500V
Rated current	500V
	76A
Rated surge voltage(III/3)	8KV

## Item properties

Type of installation	panel
Connection method	Screw connection
Screwdriver	Slotted screwdriver
screw thread	M4
Pitch	10.1mm
Number of potentials	1
Pluggable or not	Yes
Number of rows	1

## Material data

Environmental items	Compliant with REACH/RoHS
Contact material	copper
Contact point metal surface	tin-plated
Contact zone metal surface	tin-plated
Insulation Materials	PA66
Insulating material group	I
Flammability rating	UL94V-0

## Mechanical tests

Test Specification	IEC60947/UL1059
--------------------	-----------------

## Environmental data

Ambient temperature (operation)

-40°C~105°C

## Accessories

### Accessories

Coding strip

/

Bridge

/

Marking strip

/

Others

/

### Tool

Operating tool

/

Screwdriver

/

## Business data

Order number

10090000002

Packing unit

50

Minimum order quantity

30

Products weight (without packaging)

20.7