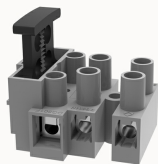


Overview

Product information



DG801-10080000109

Feed through terminal blocks, Rated current: 6.3A. Rated voltage (III/2) : 250V, pitch: 10.0mm, Color: gray, Contact surface : Ni

Product advantages

- Can realize horizontal wire-to-wire connection
- Built-in fuse for over-current protection
- Panel mounting, suitable for various situations

Product certification



Technical data

Product drawing

3D model

Connection capacity

Conductor cross section solid	0.5~2.5mm ²
Conductor cross section flexible	0.5~2.5mm ²
AWG	22~14AWG
Torque	0.5N.m
Strip length	6mm

Electrical parameters UL

Rated voltage (B)	300V
Rated voltage (D)	300V

Rated current (B)	6.3A
Rated current (D)	6.3A

Electrical parameters IEC

Rated current	250V
	6.3A
Rated current(III/2)	250V
Rated power frequency voltage(1min)	2.5KV

Item properties

Type of installation	panel
Connection method	Screw connection
Screwdriver	Slotted screwdriver
screw thread	M3
Pitch	10mm
Number of potentials	3
Pluggable or not	no

Material data

Environmental items	Compliant with REACH/RoHS
Contact material	Copper alloy
Contact point metal surface	Nickel plating
Insulation Materials	PA66
Insulating material group	I
Flammability rating	UL94V-0

Mechanical tests

Test Specification	UL1059/IEC60998/IEC60127
--------------------	--------------------------

Environmental data

Ambient temperature (operation)

-40°C~105°C

Accessories

Accessories

Coding strip

/

Bridge

/

Marking strip

/

Others

/

Tool

Operating tool

/

Screwdriver

/

Business data

Order number

10080000109

Packing unit

185

Minimum order quantity

30

Products weight (without packaging)

13.5