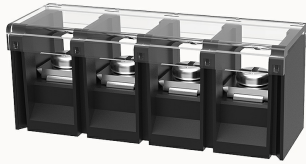


Overview

Product information



DG78C-B-12040000210

Single-layer PCB barrier terminal blocks, Rated current:40A. Rated voltage (UL) :600V, Cross section: 18-10AWG, pitch: 13.00mm, Color:black, Contact surface :Tin

Product advantages

- Screw connection for worldwide use
- Fence type wiring structure, stable and reliable connection
- Solder plate mounting for electrical connection of the device to the PCB

Product certification



Technical data

Product drawing

3D model

□

Processing notes

Process

Wave soldering/manual soldering

Connection capacity

AWG

18~10AWG

Torque

1.2N.m

Electrical parameters UL

Rated voltage (B)

600V

Rated voltage (C)

600V

Rated voltage (D)

600V

| | |
|-------------------|-----|
| Rated current (B) | 40A |
| Rated current (D) | 5A |
| Rated current (C) | 40A |

Electrical parameters IEC

| | |
|---------------|-------|
| Rated current | 1000V |
| | 41A |

Item properties

| | |
|----------------------|-------------------------------|
| Type of installation | PCB welding |
| Pin arrangement | Single row in a straight line |
| Connection method | Screw connection |
| Screwdriver | slotted-philips screwdriver |
| screw thread | M4 |
| Pitch | 13mm |
| Number of potentials | 4 |
| Pluggable or not | no |
| Number of rows | 1 |

Material data

| | |
|-----------------------------|---------------------------|
| Environmental items | Compliant with REACH/RoHS |
| Contact material | Copper alloy |
| Contact point metal surface | tin-plated |
| Insulation Materials | PA66 |
| Insulating material group | II |
| Flammability rating | UL94V-0 |

Mechanical tests

| | |
|--------------------|--------|
| Test Specification | UL1059 |
|--------------------|--------|

Environmental data

Ambient temperature (operation)

-40°C~105°C

Accessories

Accessories

Business data

| | |
|-------------------------------------|-------------|
| Order number | 12040000210 |
| Packing unit | 140 |
| Minimum order quantity | / |
| Products weight (without packaging) | 27.32 |