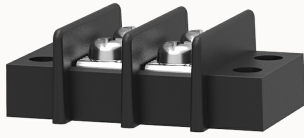


Overview

Product information

**DG69-A-12050000034**

Transfer barrier terminal blocks, Rated current:25A. Rated voltage (UL) :300V, Cross section:22~12AWG, pitch:11.00mm, Color:black, Contact surface:Tin

Product advantages

- Screw connection for worldwide use
- Fence type wiring structure, stable and reliable connection
- Panel mounting for electrical transfer between two devices in a small space

Product certification



Technical data

Product drawing

3D model

Connection capacity

AWG	22~12AWG
Torque	0.8N.m

Electrical parameters UL

Rated voltage (B)	300V
Rated voltage (C)	300V
Rated voltage (D)	300V
Rated current (B)	25A
Rated current (D)	10A

Rated current (C)	25A
-------------------	-----

Electrical parameters IEC

Rated current	750V
	32A

Item properties

Type of installation	panel
Pin arrangement	Double-row in a straight line
Connection method	Screw connection
Screwdriver	slotted-phillips screwdriver
screw thread	M3.5
Pitch	11mm
Number of potentials	2
Pluggable or not	no
Number of rows	1

Material data

Environmental items	Compliant with REACH/RoHS
Contact material	Copper alloy
Contact point metal surface	tin-plated
Insulation Materials	PC
Insulating material group	IIIa
Flammability rating	UL94V-0

Mechanical tests

Test Specification	UL1059
--------------------	--------

Environmental data

Ambient temperature (operation)	-40°C~125°C
---------------------------------	-------------

Accessories

Accessories

--	--

Business data

Order number	12050000034
Packing unit	300
Minimum order quantity	/
Products weight (without packaging)	13.3