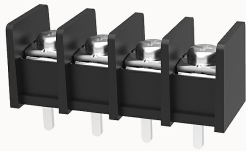


Overview

Product information



DG65S-B-12020000539

Single-layer PCB barrier terminal blocks, Rated current:30A. Rated voltage (UL) :300V, Cross section:22~10AWG, pitch:11.00mm, Color:black, Contact surface: Tin

Product advantages

- Screw connection for worldwide use
- Fence type wiring structure, stable and reliable connection
- Solder plate mounting for electrical connection of the device to the PCB

Product certification



Technical data

Product drawing

3D model

□

Processing notes

Process

Wave soldering/manual soldering

Connection capacity

AWG

22~10AWG

Torque

1.2N.m

Electrical parameters UL

Rated voltage (B)

300V

Rated voltage (D)

300V

Rated current (B)

30A

Rated current (D)	10A
-------------------	-----

Electrical parameters IEC

Rated current	300V
	32A

Item properties

Type of installation	PCB welding
Pin arrangement	Single row in a straight line
Connection method	Screw connection
Screwdriver	slotted-Phillips screwdriver
screw thread	M4
Pitch	11mm
Number of potentials	4
Pluggable or not	no
Number of rows	1

Material data

Environmental items	Compliant with REACH/RoHS
Contact material	Copper alloy
Contact point metal surface	tin-plated
Insulation Materials	PA66
Insulating material group	I
Flammability rating	UL94V-0

Mechanical tests

Test Specification	UL1059
--------------------	--------

Environmental data

Ambient temperature (operation)	-40°C~105°C
---------------------------------	-------------

Accessories

Accessories

--	--

Business data

Order number	12020000539
Packing unit	200
Minimum order quantity	/
Products weight (without packaging)	16.6