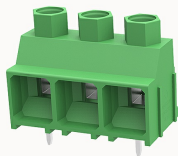


Overview

Product information



DG638-9.52-DA-10040000797

PCB terminal blocks, Rated current: 32A, Rated voltage (III/2) 1000V, Cross section: 0.2-4.0mm², pitch: 9.52mm, connector method: Screw connector with tension sleeve, Color: green, Contact surface : Tin

Product advantages

- Fixed screw connection technology, safe and reliable
- Different poles can be combined through the side lock
- Universal installation method to ensure a high degree of flexibility in device design

Product certification



Technical data

Product drawing

3D model

□

Processing notes

Process

Wave soldering/manual soldering

Connection capacity

Conductor cross section solid	0.2~6mm ²
Conductor cross section flexible	0.2~4.0mm ²
AWG	30~10AWG
Torque	0.8N.m
Strip length	8mm

Electrical parameters UL

Rated voltage (B)	600V
Rated voltage (C)	600V
Rated current (B)	30A
Rated current (C)	30A

Electrical parameters IEC

Rated voltage	1000V
Rated current(III/3)	690V
Rated current	32A
Rated current(III/2)	1000V
Rated current(II/2)	1000V
Rated surge voltage(III/3)	8KV
Rated surge voltage(III/2)	8KV
Rated surge voltage(II/2)	6KV

Item properties

Connection direction	0°
Type of installation	PCB welding
Connection method	Screw connection
Screwdriver	Slotted screwdriver
screw thread	M3.5
Pitch	9.52mm
Number of potentials	3
Pluggable or not	no
Number of rows	1

Material data

Environmental items	Compliant with REACH/RoHS
---------------------	---------------------------

Contact material	copper
Contact point metal surface	tin-plated
Insulation Materials	PA66
Insulating material group	I
Flammability rating	UL94V-0

Mechanical tests

Test Specification	IEC60947/UL1059
--------------------	-----------------

Environmental data

Ambient temperature (operation)	-40°C~105°C
---------------------------------	-------------

Accessories

Accessories

Coding strip	/
Bridge	/
Marking strip	/
Others	/

Tool

Operating tool	/
Screwdriver	0.6x3.5mm, Slotted screwdriver

Business data

Order number	10040000797
Packing unit	320
Minimum order quantity	30
Products weight (without packaging)	9.38

