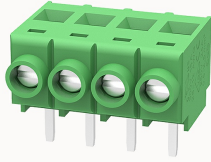


## Overview

### Product information



## DG632R-5.0-10040000598

PCB terminal blocks, Rated current: 24A, Rated voltage (III/2) 250V, Cross section: 0.5-2.5mm<sup>2</sup>, pitch: 5.0mm, connector method: Screw connector with tension sleeve, Color: green, Contact surface : Tin

### Product advantages

- Fixed screw connection technology, safe and reliable
- Universal installation method to ensure a high degree of flexibility in device design

### Product certification



## Technical data

### Product drawing

### 3D model

□

### Processing notes

Process

Wave soldering/manual soldering

### Connection capacity

Conductor cross section solid	0.5~2.5mm <sup>2</sup>
Conductor cross section flexible	0.5~2.5mm <sup>2</sup>
AWG	28~12AWG
Torque	0.4N.m
Strip length	6mm

### Electrical parameters UL

Rated voltage (B)	300V
Rated voltage (D)	300V
Rated current (B)	15A
Rated current (D)	10A

#### Electrical parameters IEC

Rated voltage	250V
Rated current	24A
Rated current(III/2)	250V
Rated surge voltage(III/2)	2KV

#### Item properties

Connection direction	90°
Type of installation	PCB welding
Pin arrangement	Single row in a straight line
Connection method	Screw connection
Screwdriver	Slotted screwdriver
screw thread	M2.5
Pitch	5mm
Number of potentials	4
Pluggable or not	no
Number of rows	1

#### Material data

Environmental items	Compliant with REACH/RoHS
Contact material	Copper alloy
Contact point metal surface	tin-plated
Insulation Materials	PA66

Insulating material group	I
Flammability rating	UL94V-0

Mechanical tests

Test Specification	UL1059/IEC60998
--------------------	-----------------

Environmental data

Ambient temperature (operation)	-40°C~105°C
---------------------------------	-------------

Accessories

Accessories

Coding strip	/
Bridge	DG019-5.0
Marking strip	/
Others	/

Tool

Operating tool	/
Screwdriver	0.6x3.5mm, Slotted screwdriver

Business data

Order number	10040000598
Packing unit	200
Minimum order quantity	30
Products weight (without packaging)	4.84