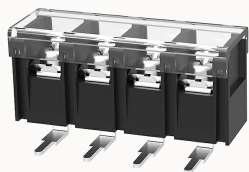


Overview

Product information


DG58R-B-12020000441

Single-layer PCB barrier terminal blocks, Rated current:20A. Rated voltage (UL) :300V, Cross section:22~12AWG, pitch:10.00mm, Color:black, Contact surface: Tin

Product advantages

- Screw connection for worldwide use
- Fence type wiring structure, stable and reliable connection
- Solder plate mounting for electrical connection of the device to the PCB

Product certification



Technical data

Product drawing

3D model

Processing notes

Process

Wave soldering/manual soldering

Connection capacity

AWG

22~12AWG

Torque

1.2N.m

Electrical parameters UL

Rated voltage (B)

300V

Rated voltage (C)

150V

Rated voltage (D)

300V

Rated current (B)	20A
Rated current (D)	10A
Rated current (C)	20A

Electrical parameters IEC

Rated current	600V
	32A

Item properties

Type of installation	PCB welding
Pin arrangement	Single row in a straight line
Connection method	Screw connection
Screwdriver	slotted-philips screwdriver
screw thread	M4
Pitch	10mm
Number of potentials	4
Pluggable or not	no
Number of rows	1

Material data

Environmental items	Compliant with REACH/RoHS
Contact material	Copper alloy
Contact point metal surface	tin-plated
Insulation Materials	PA66
Insulating material group	II
Flammability rating	UL94V-0

Mechanical tests

Test Specification	UL1059
--------------------	--------

Environmental data

Ambient temperature (operation)

-40°C~105°C

Accessories

Accessories

Business data

Order number	12020000441
Packing unit	225
Minimum order quantity	/
Products weight (without packaging)	15.11