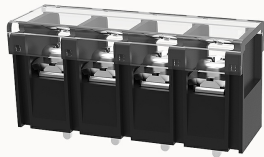


## Overview

### Product information



## DG48C-B-12040000142

Single-layer PCB barrier terminal blocks, Rated current:20A. Rated voltage (UL) :300V, Cross section:22~12AWG, pitch:9.5mm, Color:black, Contact surface:Tin

### Product advantages

- Screw connection for worldwide use
- Fence type wiring structure, stable and reliable connection
- Solder plate mounting for electrical connection of the device to the PCB

### Product certification



## Technical data

### Product drawing

### 3D model

□

### Processing notes

Process

Wave soldering/manual soldering

### Connection capacity

AWG

22~12AWG

Torque

1.2N.m

### Electrical parameters UL

Rated voltage (B)

300V

Rated voltage (C)

150V

Rated voltage (D)

300V

Rated current (B)	20A
Rated current (D)	10A
Rated current (C)	20A

#### Electrical parameters IEC

Rated current	600V
	32A

#### Item properties

Type of installation	PCB welding
Pin arrangement	Single row in a straight line
Connection method	Screw connection
Screwdriver	slotted-phillips screwdriver
screw thread	M4
Pitch	9.5mm
Number of potentials	4
Pluggable or not	no
Number of rows	1

#### Material data

Environmental items	Compliant with REACH/RoHS
Contact material	Copper alloy
Contact point metal surface	tin-plated
Insulation Materials	PA66
Insulating material group	II
Flammability rating	UL94V-0

#### Mechanical tests

Test Specification	UL1059
--------------------	--------

#### Environmental data

Ambient temperature (operation)

-40°C~105°C

#### Accessories

##### Accessories

Bridge

K24

#### Business data

Order number	12040000142
Packing unit	300
Minimum order quantity	/
Products weight (without packaging)	15