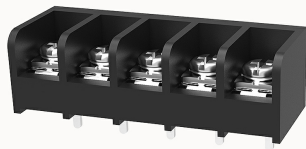


Overview

Product information



DG46S-B-12030000096

Single-layer PCB barrier terminal blocks, Rated current:30A. Rated voltage (UL) :300V, Cross section:22-10AWG, pitch:9.5mm, Color:black, Contact surface :Tin

Product advantages

- Screw connection for worldwide use
- Fence type wiring structure, stable and reliable connection
- Solder plate mounting for electrical connection of the device to the PCB

Product certification



Technical data

Product drawing

3D model

□

Processing notes

Process

Wave soldering/manual soldering

Connection capacity

AWG

22~10AWG

Torque

1.2N.m

Electrical parameters UL

Rated voltage (B)

300V

Rated voltage (C)

300V

Rated voltage (D)

300V

Rated current (B)	30A
Rated current (D)	10A
Rated current (C)	30A

Electrical parameters IEC

Rated current	600V
	32A

Item properties

Type of installation	PCB welding
Pin arrangement	Single row in a straight line
Connection method	Screw connection
Screwdriver	slotted-philips screwdriver
screw thread	M4
Pitch	9.5mm
Number of potentials	5
Pluggable or not	no
Number of rows	1

Material data

Environmental items	Compliant with REACH/RoHS
Contact material	Copper alloy
Contact point metal surface	tin-plated
Insulation Materials	PA66
Insulating material group	I
Flammability rating	UL94V-0

Mechanical tests

Test Specification	UL1059
--------------------	--------

Environmental data

Ambient temperature (operation)

-40°C~105°C

Accessories

Accessories

Bridge

K24

Business data

Order number	12030000096
Packing unit	230
Minimum order quantity	/
Products weight (without packaging)	15.43