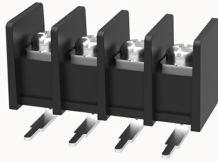


Overview

Product information



DG45R-B-12020000260

Single-layer PCB barrier terminal blocks, Rated current:25A. Rated voltage (UL) :300V, Cross section:22~12AWG, pitch:9.5mm, Color:black, Contact surface:Tin

Product advantages

- Screw connection for worldwide use
- Fence type wiring structure, stable and reliable connection
- Solder plate mounting for electrical connection of the device to the PCB

Product certification



Technical data

Product drawing

3D model

□

Processing notes

Process	Wave soldering/manual soldering
---------	---------------------------------

Connection capacity

AWG	22~12AWG
Torque	1.2N.m

Electrical parameters UL

Rated voltage (B)	300V
Rated voltage (D)	300V
Rated current (B)	25A

Rated current (D)	10A
-------------------	-----

Electrical parameters IEC

Rated current	600V
	32A

Item properties

Type of installation	PCB welding
Pin arrangement	Single row in a straight line
Connection method	Screw connection
Screwdriver	slotted-phillips screwdriver
screw thread	M4
Pitch	9.5mm
Number of potentials	4
Pluggable or not	no
Number of rows	1

Material data

Environmental items	Compliant with REACH/RoHS
Contact material	Copper alloy
Contact point metal surface	tin-plated
Insulation Materials	PA66
Insulating material group	I
Flammability rating	UL94V-0

Mechanical tests

Test Specification	UL1059
--------------------	--------

Environmental data

Ambient temperature (operation)	-40°C~105°C
---------------------------------	-------------

Accessories

Accessories

Bridge

K24

Business data

Order number	12020000260
Packing unit	230
Minimum order quantity	/
Products weight (without packaging)	15.2