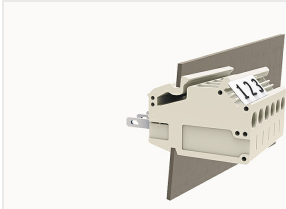


## Overview

### Product information



**DG4-10090000001**

Through-wall terminal blocks, Rated current: 24A, Rated voltage (III/2) : 400V, Width: 6.1mm, Color: gray, Contact surface : Tin

### Product advantages

- Screw connection technology, safe and reliable
- Through-wall installation, free positioning

### Product certification

## Technical data

### Product drawing

### 3D model

□

### Connection capacity

Conductor cross section solid	0.2~4mm <sup>2</sup>
Conductor cross section flexible	0.2~4.0mm <sup>2</sup>
AWG	30~10AWG
Torque	0.5N.m
Strip length	6mm

### Electrical parameters UL

Rated voltage (B)	300V
Rated voltage (D)	300V
Rated current (B)	20A
Rated current (D)	10A

## Electrical parameters IEC

Rated current	400V
	24A
Rated current(III/2)	400V
Rated surge voltage(III/2)	2.5KV

## Item properties

Type of installation	panel
Connection method	Screw connection
Screwdriver	Slotted screwdriver
screw thread	M3
Pitch	6.1mm
Number of potentials	1
Pluggable or not	no
Number of rows	1

## Material data

Environmental items	Compliant with REACH/RoHS
Contact material	copper
Contact point metal surface	tin-plated
Insulation Materials	PA66
Insulating material group	I
Flammability rating	UL94V-0

## Mechanical tests

Test Specification	IEC60947/UL1059
--------------------	-----------------

## Environmental data

Ambient temperature (operation)	-40°C~105°C
---------------------------------	-------------

## Accessories

### Accessories

Coding strip	/
Bridge	/
Marking strip	/
Others	/

### Tool

Operating tool	/
Screwdriver	/

## Business data

Order number	10090000001
Packing unit	120
Minimum order quantity	30
Products weight (without packaging)	4.7