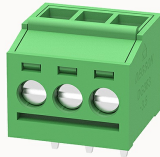


## Overview

### Product information



## DG383-3.5-10040002119

PCB terminal blocks, Rated current: 12A, Rated voltage (III/2) 160V, Cross section: 1.5mm<sup>2</sup>, pitch: 3.5mm, connector method: Screw connector with tension sleeve, Color: green, Contact surface : Tin

### Product advantages

- Fixed screw connection technology, safe and reliable
- Universal installation method to ensure a high degree of flexibility in device design

### Product certification



## Technical data

### Product drawing

### 3D model

□

### Processing notes

Process

Wave soldering/manual soldering

### Connection capacity

|                                  |                        |
|----------------------------------|------------------------|
| Conductor cross section solid    | 0.2~1.5mm <sup>2</sup> |
| Conductor cross section flexible | 0.2~1.5mm <sup>2</sup> |
| AWG                              | 30~14AWG               |
| Torque                           | 0.2N.m                 |
| Strip length                     | 6mm                    |

### Electrical parameters UL

|                   |      |
|-------------------|------|
| Rated voltage (B) | 300V |
| Rated current (B) | 15A  |

#### Electrical parameters IEC

|                            |       |
|----------------------------|-------|
| Rated voltage              | 160V  |
| Rated current(III/3)       | 160V  |
| Rated current              | 12A   |
| Rated current(III/2)       | 160V  |
| Rated current(II/2)        | 320V  |
| Rated surge voltage(III/3) | 2.5KV |
| Rated surge voltage(III/2) | 2.5KV |
| Rated surge voltage(II/2)  | 2.5KV |

#### Item properties

|                      |                               |
|----------------------|-------------------------------|
| Connection direction | 90°                           |
| Type of installation | PCB welding                   |
| Pin arrangement      | Single row in a straight line |
| Connection method    | Screw connection              |
| Screwdriver          | Slotted screwdriver           |
| screw thread         | M2                            |
| Pitch                | 3.5mm                         |
| Number of potentials | 3                             |
| Pluggable or not     | no                            |
| Number of rows       | 1                             |

#### Material data

|                     |                           |
|---------------------|---------------------------|
| Environmental items | Compliant with REACH/RoHS |
| Contact material    | Copper alloy              |

|                             |            |
|-----------------------------|------------|
| Contact point metal surface | tin-plated |
| Insulation Materials        | PA66       |
| Insulating material group   | I          |
| Flammability rating         | UL94V-0    |

#### Mechanical tests

|                    |                 |
|--------------------|-----------------|
| Test Specification | IEC60947/UL1059 |
|--------------------|-----------------|

#### Environmental data

|                                 |             |
|---------------------------------|-------------|
| Ambient temperature (operation) | -40°C~105°C |
|---------------------------------|-------------|

### Accessories

#### Accessories

|               |   |
|---------------|---|
| Coding strip  | / |
| Bridge        | / |
| Marking strip | / |
| Others        | / |

#### Tool

|                |                                |
|----------------|--------------------------------|
| Operating tool | /                              |
| Screwdriver    | 0.4x2.5mm, Slotted screwdriver |

### Business data

|                                     |             |
|-------------------------------------|-------------|
| Order number                        | 10040002119 |
| Packing unit                        | 250         |
| Minimum order quantity              | 30          |
| Products weight (without packaging) | 2.37        |

