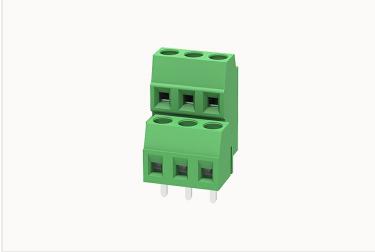


Overview

Product information



### DG381A-3.81-10040002200

PCB terminal blocks, Rated current: 10A, Rated voltage (III/2) 130V, Cross section: 1.0mm<sup>2</sup>, pitch: 3.81mm, connector method: Screw connector with tension sleeve, Color: green, Contact surface : Tin

Product advantages

- Universal connection method to ensure a high degree of flexibility in device design
- Multi-layer wire connection can achieve higher contact density
- Fixed screw connection technology, safe and reliable

Product certification



Technical data

Product drawing

3D model

□

Processing notes

Process	Wave soldering/manual soldering
---------	---------------------------------

Connection capacity

Conductor cross section solid	0.2~1.0mm <sup>2</sup>
Conductor cross section flexible	0.2~1.0mm <sup>2</sup>
AWG	26~16AWG
Torque	0.2N.m
Strip length	6mm

Electrical parameters UL

Rated voltage (B)	300V
Rated current (B)	12A

#### Electrical parameters IEC

Rated voltage	130V
Rated current	10A
Rated current(III/2)	130V
Rated power frequency voltage(1min)	1.25KV

#### Item properties

Connection direction	0°
Type of installation	PCB welding
Pin arrangement	Double-row in a straight line
Connection method	Screw connection
Screwdriver	Slotted screwdriver
screw thread	M2
Pitch	3.81mm
Number of potentials	6
Pluggable or not	no
Number of rows	2

#### Material data

Environmental items	Compliant with REACH/RoHS
Contact material	Copper alloy
Contact point metal surface	tin-plated
Insulation Materials	PA66
Insulating material group	I
Flammability rating	UL94V-0

**Mechanical tests**

Test Specification

UL1059/IEC60998

**Environmental data**

Ambient temperature (operation)

-40°C~105°C

**Accessories****Accessories**

Coding strip

/

Bridge

DG032-3.81

Marking strip

/

Others

/

**Tool**

Operating tool

/

Screwdriver

0.4x2.5mm, Slotted screwdriver

**Business data**

Order number

10040002200

Packing unit

335

Minimum order quantity

30

Products weight (without packaging)

3.73