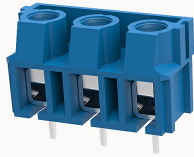


Overview

Product information



DG365-7.5-10050000345

PCB terminal blocks, Rated current: 20A, Rated voltage (III/2) 450V, Cross section: 2.5mm², pitch: 7.5mm, connector method: screw connector with wire protection, Color: blue, Contact surface : Tin

Product advantages

- Universal installation method to ensure a high degree of flexibility in device design
- Square wiring hole, large wiring capacity
- Different poles can be combined through the side lock

Product certification



Technical data

Product drawing

3D model

□

Processing notes

Process

Wave soldering/manual soldering

Connection capacity

Conductor cross section solid

1.0~2.5mm²

Conductor cross section flexible

1.0~2.5mm²

AWG

22~14AWG

Strip length

6mm

Electrical parameters UL

Rated voltage (B)	300V
Rated voltage (D)	300V
Rated current (B)	15A
Rated current (D)	10A

Electrical parameters IEC

Rated voltage	450V
Rated current	24A
Rated current(III/2)	450V
Rated power frequency voltage(1min)	2.5KV

Item properties

Connection direction	0°
Type of installation	PCB welding
Pin arrangement	Single row in a straight line
Connection method	Screw connection with wire protection
Screwdriver	Slotted screwdriver
screw thread	M2.5
Pitch	7.5mm
Number of potentials	3
Pluggable or not	no
Number of rows	1

Material data

Environmental items	Compliant with REACH/RoHS
Contact material	Copper alloy
Contact point metal surface	tin-plated

Insulation Materials	PBT
Insulating material group	IIIa
Flammability rating	UL94V-0

Mechanical tests

Test Specification	UL1059/IEC60998
--------------------	-----------------

Environmental data

Ambient temperature (operation)	-30°C~120°C
---------------------------------	-------------

Accessories

Accessories

Coding strip	/
Bridge	/
Marking strip	/
Others	/

Tool

Operating tool	/
Screwdriver	0.6x3.5mm, Slotted screwdriver

Business data

Order number	10050000345
Packing unit	#N/A
Minimum order quantity	30
Products weight (without packaging)	#N/A