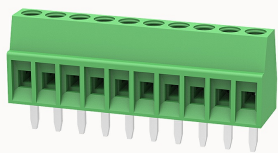


## Overview

### Product information



## DG308-2.54-10040001149

PCB terminal blocks, Rated current: 8A, Rated voltage (III/2) 130V, Cross section: 1.0mm<sup>2</sup>, pitch: 2.54mm, connector method: Screw connector with tension sleeve, Color: green, Contact surface : Tin

### Product advantages

- Universal installation method to ensure a high degree of flexibility in device design
- Fixed screw connection technology, safe and reliable

### Product certification



## Technical data

### Product drawing

### 3D model

□

### Processing notes

Process

Wave soldering/manual soldering

### Connection capacity

Conductor cross section solid

0.5~1.0mm<sup>2</sup>

Conductor cross section flexible

0.5~1.0mm<sup>2</sup>

AWG

26~18AWG

Strip length

4mm

### Electrical parameters UL

Rated voltage (B)

150V

Rated current (B)	6A
-------------------	----

#### Electrical parameters IEC

Rated voltage	130V
Rated current	8A
Rated current(III/2)	130V
Rated power frequency voltage(1min)	1.25KV

#### Item properties

Connection direction	0°
Type of installation	PCB welding
Pin arrangement	Single row in a straight line
Connection method	Screw connection
Screwdriver	Slotted screwdriver
screw thread	M1.6
Pitch	2.54mm
Number of potentials	10
Pluggable or not	no
Number of rows	1

#### Material data

Environmental items	Compliant with REACH/RoHS
Contact material	Copper alloy
Contact point metal surface	tin-plated
Insulation Materials	PA66
Insulating material group	I
Flammability rating	UL94V-0

#### Mechanical tests

Test Specification

UL1059/IEC60998

Environmental data

Ambient temperature (operation)

-40°C~105°C

Accessories

Accessories

Coding strip

/

Bridge

/

Marking strip

/

Others

/

Tool

Operating tool

/

Screwdriver

0.4x2.0mm, Slotted screwdriver

Business data

Order number

10040001149

Packing unit

2380

Minimum order quantity

30

Products weight (without packaging)

2.73