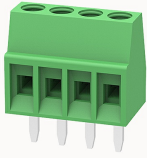


Overview

Product information



DG308-2.54-10040001142

PCB terminal blocks, Rated current: 8A, Rated voltage (III/2) 130V, Cross section: 1.0mm², pitch: 2.54mm, connector method: Screw connector with tension sleeve, Color: green, Contact surface : Tin

Product advantages

- Universal installation method to ensure a high degree of flexibility in device design
- Fixed screw connection technology, safe and reliable

Product certification



Technical data

Product drawing

3D model

□

Processing notes

Process

Wave soldering/manual soldering

Connection capacity

Conductor cross section solid	0.5~1.0mm ²
Conductor cross section flexible	0.5~1.0mm ²
AWG	26~18AWG
Strip length	4mm

Electrical parameters UL

Rated voltage (B)

150V

Rated current (B)	6A
-------------------	----

Electrical parameters IEC

Rated voltage	130V
Rated current	8A
Rated current(III/2)	130V
Rated power frequency voltage(1min)	1.25KV

Item properties

Connection direction	0°
Type of installation	PCB welding
Pin arrangement	Single row in a straight line
Connection method	Screw connection
Screwdriver	Slotted screwdriver
screw thread	M1.6
Pitch	2.54mm
Number of potentials	4
Pluggable or not	no
Number of rows	1

Material data

Environmental items	Compliant with REACH/RoHS
Contact material	Copper alloy
Contact point metal surface	tin-plated
Insulation Materials	PA66
Insulating material group	I
Flammability rating	UL94V-0

Mechanical tests

Test Specification	UL1059/IEC60998
--------------------	-----------------

Environmental data

Ambient temperature (operation)	-40°C~105°C
---------------------------------	-------------

Accessories

Accessories

Coding strip	/
Bridge	/
Marking strip	/
Others	/

Tool

Operating tool	/
Screwdriver	0.4x2.0mm, Slotted screwdriver

Business data

Order number	10040001142
Packing unit	700
Minimum order quantity	30
Products weight (without packaging)	1.07