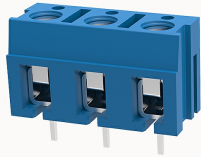


Overview

Product information



DG305-7.5-10050000254

PCB terminal blocks, Rated current: 20A, Rated voltage (III/2) 450V, Cross section: 2.5mm², pitch: 7.5mm, connector method: screw connector with wire protection, Color: blue, Contact surface : Tin

Product advantages

- Fixed screw connection technology, safe and reliable
- Square wiring hole, large wiring capacity

Product certification



Technical data

Product drawing

3D model

□

Processing notes

Process

Wave soldering/manual soldering

Connection capacity

Conductor cross section solid	1.0~2.5mm ²
Conductor cross section flexible	1.0~2.5mm ²
AWG	22~14AWG
Strip length	6mm

Electrical parameters UL

Rated voltage (B)	300V
Rated voltage (D)	300V

Rated current (B)	15A
Rated current (D)	10A

Electrical parameters IEC

Rated voltage	450V
Rated current	20A
Rated current(III/2)	450V
Rated power frequency voltage(1min)	2.5KV

Item properties

Connection direction	0°
Type of installation	PCB welding
Pin arrangement	Single row in a straight line
Connection method	Screw connection with wire protection
Screwdriver	Slotted screwdriver
screw thread	M2.5
Pitch	7.5mm
Number of potentials	3
Pluggable or not	no
Number of rows	1

Material data

Environmental items	Compliant with REACH/RoHS
Contact material	Copper alloy
Contact point metal surface	tin-plated
Insulation Materials	PBT
Insulating material group	IIIa
Flammability rating	UL94V-0

Mechanical tests

Test Specification

UL1059/IEC60998

Environmental data

Ambient temperature (operation)

-30°C~120°C

Accessories

Accessories

Coding strip

/

Bridge

/

Marking strip

/

Others

/

Tool

Operating tool

/

Screwdriver

0.6x3.5mm, Slotted screwdriver

Business data

Order number

10050000254

Packing unit

#N/A

Minimum order quantity

30

Products weight (without packaging)

#N/A