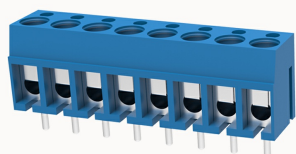


Overview

Product information


DG300-5.0-10050000390

PCB terminal blocks, Rated current: 24A, Rated voltage (III/2) 250V, Cross section: 2.5mm², pitch: 5.0mm, connector method: screw connector with wire protection, Color: blue, Contact surface : Tin

Product advantages

- Universal installation method to ensure a high degree of flexibility in device design
- Different poles can be combined through the side lock

Product certification



Technical data

Product drawing

3D model

Processing notes

Process

Wave soldering/manual soldering

Connection capacity

Conductor cross section solid

 1.0~2.5mm²

Conductor cross section flexible

 1.0~2.5mm²

AWG

22~14AWG

Strip length

6mm

Electrical parameters UL

Rated voltage (B)

300V

Rated voltage (D)

300V

Rated current (B)	10A
Rated current (D)	10A

Electrical parameters IEC

Rated voltage	250V
Rated current	24A
Rated current(III/2)	250V
Rated surge voltage(III/2)	2KV

Item properties

Connection direction	0°
Type of installation	PCB welding
Pin arrangement	Single row in a straight line
Connection method	Screw connection with wire protection
Screwdriver	Slotted screwdriver
screw thread	M3
Pitch	5mm
Number of potentials	8
Pluggable or not	no
Number of rows	1

Material data

Environmental items	Compliant with REACH/RoHS
Contact material	Copper alloy
Contact point metal surface	tin-plated
Insulation Materials	PBT
Insulating material group	IIIb
Flammability rating	UL94V-0

Mechanical tests

Test Specification

UL1059/IEC60998

Environmental data

Ambient temperature (operation)

-30°C~120°C

Accessories

Accessories

Coding strip

/

Bridge

DG019-5.0

Marking strip

/

Others

/

Tool

Operating tool

/

Screwdriver

0.6x3.5mm, Slotted screwdriver

Business data

Order number

10050000390

Packing unit

#N/A

Minimum order quantity

30

Products weight (without packaging)

#N/A