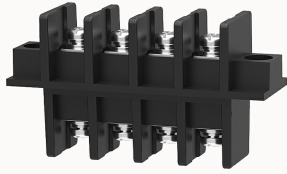


Overview

Product information



DG30-A-12050000075

Transfer barrier terminal blocks, Rated current:30A. Rated voltage (UL) :300V, Cross section:28~10AWG, pitch:13.00mm, Color:black, Contact surface: Tin

Product advantages

- Screw connection for worldwide use
- Fence type wiring structure, stable and reliable connection
- Panel mounting for electrical transfer between two devices in a small space

Product certification



Technical data

Product drawing

3D model

□

Connection capacity

AWG	28~10AWG
Torque	1.2N.m

Electrical parameters UL

Rated voltage (B)	300V
Rated voltage (D)	300V
Rated current (B)	30A
Rated current (D)	10A

Electrical parameters IEC

Rated current	1000V
	41A

Item properties

Type of installation	panel
Pin arrangement	Double-row in a straight line
Connection method	Screw connection
Screwdriver	slotted-phillips screwdriver
screw thread	M4
Pitch	13mm
Number of potentials	4
Pluggable or not	no
Number of rows	2

Material data

Environmental items	Compliant with REACH/RoHS
Contact material	Copper alloy
Contact point metal surface	tin-plated
Insulation Materials	PA66
Insulating material group	II
Flammability rating	UL94V-0

Mechanical tests

Test Specification	UL1059
--------------------	--------

Environmental data

Ambient temperature (operation)	-40°C~120°C
---------------------------------	-------------

Accessories

Accessories

--	--

Business data

Order number	12050000075
Packing unit	50
Minimum order quantity	/
Products weight (without packaging)	55