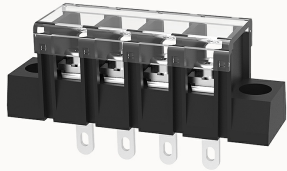


Overview

Product information

**DG28H-A-12040000025**

Single-layer PCB barrier terminal blocks, Rated current: 15A. Rated voltage (UL) : 300V, Cross section: 22-14AWG, pitch: 7.62mm, Color: black, Contact surface : Tin

Product advantages

- Screw connection for worldwide use
- Fence type wiring structure, stable and reliable connection
- Solder plate mounting for electrical connection of the device to the PCB

Product certification



Technical data

Product drawing

3D model

□

Processing notes

Process	Wave soldering/manual soldering
---------	---------------------------------

Connection capacity

AWG	22~14AWG
Torque	0.5N.m

Electrical parameters UL

Rated voltage (B)	300V
Rated voltage (D)	300V
Rated current (B)	15A

Rated current (D)	10A
-------------------	-----

Electrical parameters IEC

Rated current	300V
	24A

Item properties

Type of installation	PCB welding
Pin arrangement	Single row in a straight line
Connection method	Screw connection
Screwdriver	slotted-Phillips screwdriver
screw thread	M3
Pitch	7.62mm
Number of potentials	4
Pluggable or not	no
Number of rows	1

Material data

Environmental items	Compliant with REACH/RoHS
Contact material	Copper alloy
Contact point metal surface	tin-plated
Insulation Materials	PA66
Insulating material group	II
Flammability rating	UL94V-0

Mechanical tests

Test Specification	UL1059
--------------------	--------

Environmental data

Ambient temperature (operation)	-40°C~105°C
---------------------------------	-------------

Accessories

Accessories

Business data

Order number	12040000025
Packing unit	310
Minimum order quantity	/
Products weight (without packaging)	9.8387096774194