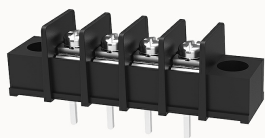


## Overview

## Product information


**DG25S-A-12020000744**

Single-layer PCB barrier terminal blocks, Rated current: 15A. Rated voltage (UL) : 300V, Cross section: 22~14AWG, pitch: 7.62mm, Color: black, Contact surface: Tin

## Product advantages

- Screw connection for worldwide use
- Fence type wiring structure, stable and reliable connection
- Solder plate mounting for electrical connection of the device to the PCB

## Product certification



## Technical data

## Product drawing

## 3D model

□

## Processing notes

Process

Wave soldering/manual soldering

## Connection capacity

AWG

22~14AWG

Torque

0.5N.m

## Electrical parameters UL

Rated voltage (B)

300V

Rated voltage (D)

300V

Rated current (B)

15A

Rated current (D)	10A
-------------------	-----

Electrical parameters IEC

Rated current	300V
	24A

Item properties

Type of installation	PCB welding
Pin arrangement	Single row in a straight line
Connection method	Screw connection
Screwdriver	slotted-phillips screwdriver
screw thread	M3
Pitch	7.62mm
Number of potentials	4
Pluggable or not	no
Number of rows	1

Material data

Environmental items	Compliant with REACH/RoHS
Contact material	Copper alloy
Contact point metal surface	tin-plated
Insulation Materials	PA66
Insulating material group	I
Flammability rating	UL94V-0

Mechanical tests

Test Specification	UL1059
--------------------	--------

Environmental data

Ambient temperature (operation)	-40°C~105°C
---------------------------------	-------------

## Accessories

### Accessories

--	--

## Business data

Order number	12020000744
Packing unit	=64*5
Minimum order quantity	/
Products weight (without packaging)	7.98