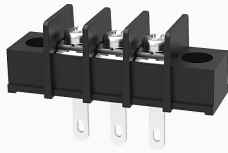


## Overview

### Product information



## DG25H-A-12020000043

Single-layer PCB barrier terminal blocks, Rated current: 15A. Rated voltage (UL) :300V, Cross section: 22~14AWG, pitch: 7.62mm, Color: black, Contact surface: Tin

### Product advantages

- Screw connection for worldwide use
- Fence type wiring structure, stable and reliable connection
- Solder plate mounting for electrical connection of the device to the PCB

### Product certification



## Technical data

### Product drawing

### 3D model

□

### Processing notes

Process

Wave soldering/manual soldering

### Connection capacity

AWG

22~14AWG

Torque

0.5N.m

### Electrical parameters UL

Rated voltage (B)

300V

Rated voltage (D)

300V

Rated current (B)

15A

Rated current (D)	10A
-------------------	-----

#### Electrical parameters IEC

Rated current	300V
	24A

#### Item properties

Type of installation	PCB welding
Pin arrangement	Single row in a straight line
Connection method	Screw connection
Screwdriver	slotted-phillips screwdriver
screw thread	M3
Pitch	7.62mm
Number of potentials	3
Pluggable or not	no
Number of rows	1

#### Material data

Environmental items	Compliant with REACH/RoHS
Contact material	Copper alloy
Contact point metal surface	tin-plated
Insulation Materials	PA66
Insulating material group	I
Flammability rating	UL94V-0

#### Mechanical tests

Test Specification	UL1059
--------------------	--------

#### Environmental data

Ambient temperature (operation)	-40°C~105°C
---------------------------------	-------------

## Accessories

### Accessories

--	--

## Business data

Order number	12020000043
Packing unit	100
Minimum order quantity	/
Products weight (without packaging)	7.5