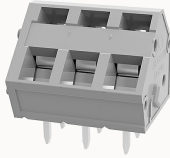


## Overview

### Product information



**DG245-5.08-10060001312**

PCB spring terminal blocks, Rated current: 17A. Rated voltage (III/2) : 320V, pitch: 5.08mm, Color: gray, Contact surface : Tin

### Product advantages

- Cage clamp connection technology, fast wiring
- Different poles can be combined through the side lock
- Universal installation method to ensure a high degree of flexibility in device design

### Product certification



## Technical data

### Product drawing

### 3D model

□

### Processing notes

Process

Wave soldering/manual soldering

### Connection capacity

Conductor cross section solid

0.2~2.5mm<sup>2</sup>

Conductor cross section flexible

0.2~2.5mm<sup>2</sup>

AWG

28~12AWG

Strip length

6mm

### Electrical parameters UL

Rated voltage (B)

300V

Rated voltage (D)

300V

Rated current (B)	15A
Rated current (D)	10A

#### Electrical parameters IEC

Rated voltage	320V
Rated current(III/3)	320V
Rated current	17A
Rated current(III/2)	320V
Rated current(II/2)	630V
Rated surge voltage(III/3)	4KV
Rated surge voltage(III/2)	4KV
Rated surge voltage(II/2)	4KV

#### Item properties

Connection direction	45°
Type of installation	PCB welding
Pin arrangement	Double-row in a straight line
Connection method	spring-cage connection
Pitch	5.08mm
Number of potentials	3
Pluggable or not	no
Number of rows	1

#### Material data

Environmental items	Compliant with REACH/RoHS
Contact material	Copper alloy
Contact point metal surface	tin-plated

Insulation Materials	PA66
Insulating material group	I
Flammability rating	UL94V-0

**Mechanical tests**

Test Specification	IEC60947/UL1059
--------------------	-----------------

**Environmental data**

Ambient temperature (operation)	-40°C~105°C
---------------------------------	-------------

**Accessories**

**Accessories**

Coding strip	/
Bridge	/
Marking strip	/
Others	/

**Tool**

Operating tool	/
Screwdriver	/

**Business data**

Order number	10060001312
Packing unit	1050
Minimum order quantity	30
Products weight (without packaging)	2.83