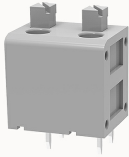


## Overview

### Product information



## DG236-7.5-10060002278

PCB spring terminal blocks, Rated current: 17.5A. Rated voltage (III/2) : 250V, pitch: 7.5mm, Color: gray, Contact surface : Tin

### Product advantages

- PUSH-IN connection technology, fast wiring
- Different poles can be combined through the side lock
- Universal installation method to ensure a high degree of flexibility in device design

### Product certification



## Technical data

### Product drawing

### 3D model

□

### Processing notes

Process

Wave soldering/manual soldering

### Connection capacity

Conductor cross section solid

0.2~1.5mm<sup>2</sup>

Conductor cross section flexible

0.2~1.5mm<sup>2</sup>

AWG

20~16AWG

Strip length

10mm

### Electrical parameters UL

Rated voltage (B)

300V

Rated voltage (C)

300V

Rated voltage (D)	300V
Rated current (B)	8A
Rated current (D)	8A
Rated current (C)	8A

#### Electrical parameters IEC

Rated voltage	250V
Rated current	17.5A
Rated current(III/2)	250V
Rated surge voltage(III/2)	2KV

#### Item properties

Connection direction	90°
Type of installation	PCB welding
Pin arrangement	Double-row in a straight line
Connection method	Push-in spring connection
Pitch	7.5mm
Number of potentials	2
Pluggable or not	no
Number of rows	1

#### Material data

Environmental items	Compliant with REACH/RoHS
Contact material	copper
Contact point metal surface	tin-plated
Insulation Materials	PA66
Insulating material group	I

Flammability rating	UL94V-0
---------------------	---------

**Mechanical tests**

Test Specification	UL1059/IEC60998
--------------------	-----------------

**Environmental data**

Ambient temperature (operation)	-40°C~105°C
---------------------------------	-------------

**Accessories**

**Accessories**

Coding strip	/
Bridge	/
Marking strip	/
Others	/

**Tool**

Operating tool	/
Screwdriver	/

**Business data**

Order number	10060002278
Packing unit	1220
Minimum order quantity	30
Products weight (without packaging)	2.39