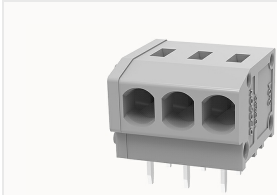


Overview

Product information



DG235W-3.81-10060000902

PCB spring terminal blocks, Rated current: 10A. Rated voltage (III/2) : 250V, pitch: 3.81mm, Color: gray, Contact surface : Tin

Product advantages

- PUSH-IN connection technology, fast wiring
- Different poles can be combined through the side lock
- Universal installation method to ensure a high degree of flexibility in device design

Product certification



Technical data

Product drawing

3D model

□

Processing notes

| | |
|---------|---------------------------------|
| Process | Wave soldering/manual soldering |
|---------|---------------------------------|

Connection capacity

| | |
|----------------------------------|-------------------------|
| Conductor cross section solid | 0.5~1.5mm ² |
| Conductor cross section flexible | 0.75~1.5mm ² |
| AWG | 20~18AWG |
| Strip length | 10mm |

Electrical parameters UL

| | |
|-------------------|------|
| Rated voltage (B) | 300V |
| Rated voltage (C) | 150V |

| | |
|-------------------|------|
| Rated voltage (D) | 300V |
| Rated current (B) | 5A |
| Rated current (D) | 5A |
| Rated current (C) | 5A |

Electrical parameters IEC

| | |
|----------------------------|------|
| Rated voltage | 250V |
| Rated current | 10A |
| Rated current(III/2) | 250V |
| Rated surge voltage(III/2) | 2KV |

Item properties

| | |
|----------------------|-------------------------------|
| Connection direction | 0° |
| Type of installation | PCB welding |
| Pin arrangement | Double-row in a straight line |
| Connection method | Push-in spring connection |
| Pitch | 3.81mm |
| Number of potentials | 3 |
| Pluggable or not | no |
| Number of rows | 1 |

Material data

| | |
|-----------------------------|---------------------------|
| Environmental items | Compliant with REACH/RoHS |
| Contact material | Copper alloy |
| Contact point metal surface | tin-plated |
| Insulation Materials | PA66 |
| Insulating material group | I |

| | |
|---------------------|---------|
| Flammability rating | UL94V-0 |
|---------------------|---------|

Mechanical tests

| | |
|--------------------|-----------------|
| Test Specification | UL1059/IEC60998 |
|--------------------|-----------------|

Environmental data

| | |
|---------------------------------|-------------|
| Ambient temperature (operation) | -40°C~105°C |
|---------------------------------|-------------|

Accessories

Accessories

| | |
|---------------|---|
| Coding strip | / |
| Bridge | / |
| Marking strip | / |
| Others | / |

Tool

| | |
|----------------|---|
| Operating tool | / |
| Screwdriver | / |

Business data

| | |
|-------------------------------------|-------------|
| Order number | 10060000902 |
| Packing unit | 1800 |
| Minimum order quantity | 30 |
| Products weight (without packaging) | 1.66 |