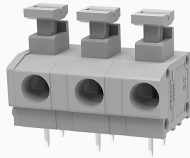


Overview

Product information



DG235-7.5-10060000886

PCB spring terminal blocks, Rated current: 17.5A. Rated voltage (III/2) : 1000V, pitch: 7.5mm, Color: gray, Contact surface : Tin

Product advantages

- PUSH-IN connection technology, fast wiring
- Different poles can be combined through the side lock
- Universal installation method to ensure a high degree of flexibility in device design

Product certification



Technical data

Product drawing

3D model

□

Processing notes

Process

Wave soldering/manual soldering

Connection capacity

Conductor cross section solid

0.2~2.5mm²

Conductor cross section flexible

0.2~1.5mm²

AWG

20~18AWG

Strip length

10mm

Electrical parameters UL

Rated voltage (B)

300V

Rated voltage (C)

150V

Rated voltage (D)	300V
Rated current (B)	5A
Rated current (D)	5A
Rated current (C)	5A

Electrical parameters IEC

Rated voltage	1000V
Rated current(III/3)	400V
Rated current	17.5A
Rated current(III/2)	1000V
Rated current(II/2)	1000V
Rated surge voltage(III/3)	8KV
Rated surge voltage(III/2)	8KV
Rated surge voltage(II/2)	8KV

Item properties

Connection direction	0°
Type of installation	PCB welding
Pin arrangement	Double-row in a straight line
Connection method	Push-in spring connection
Pitch	7.5mm
Number of potentials	3
Pluggable or not	no
Number of rows	1

Material data

Environmental items	Compliant with REACH/RoHS
---------------------	---------------------------

Contact material	Copper alloy
Contact point metal surface	tin-plated
Insulation Materials	PA66
Insulating material group	I
Flammability rating	UL94V-0

Mechanical tests

Test Specification	IEC60947/UL1059
--------------------	-----------------

Environmental data

Ambient temperature (operation)	-40°C~105°C
---------------------------------	-------------

Accessories

Accessories

Coding strip	/
Bridge	/
Marking strip	/
Others	/

Tool

Operating tool	/
Screwdriver	/

Business data

Order number	10060000886
Packing unit	700
Minimum order quantity	30
Products weight (without packaging)	2.67

