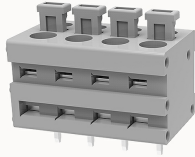


## Overview

### Product information



## DG211V-5.0-10060000759

PCB spring terminal blocks, Rated current: 15A. Rated voltage (III/2) : 250V, pitch: 5.0mm, Color: gray, Contact surface : Tin

### Product advantages

- PUSH-IN connection technology, fast wiring
- Different poles can be combined through the side lock
- Universal installation method to ensure a high degree of flexibility in device design

### Product certification



## Technical data

### Product drawing

### 3D model

□

### Processing notes

Process

Wave soldering/manual soldering

### Connection capacity

Conductor cross section solid

0.2~1.5mm<sup>2</sup>

Conductor cross section flexible

0.2~1.5mm<sup>2</sup>

AWG

26~16AWG

Strip length

8mm

### Electrical parameters UL

Rated voltage (B)

300V

Rated voltage (D)

300V

Rated current (B)	8A
Rated current (D)	8A

#### Electrical parameters IEC

Rated voltage	250V
Rated current	15A
Rated current(III/2)	250V
Rated surge voltage(III/2)	2KV

#### Item properties

Connection direction	90°
Type of installation	PCB welding
Pin arrangement	Single row in a straight line
Connection method	Push-in spring connection
Pitch	5mm
Number of potentials	4
Pluggable or not	no
Number of rows	1

#### Material data

Environmental items	Compliant with REACH/RoHS
Contact material	Copper alloy
Contact point metal surface	tin-plated
Insulation Materials	PA66
Insulating material group	I
Flammability rating	UL94V-0

#### Mechanical tests

Test Specification	UL1059/IEC60998
--------------------	-----------------

#### Environmental data

Ambient temperature (operation)	-40°C~105°C
---------------------------------	-------------

#### Accessories

##### Accessories

Coding strip	/
Bridge	/
Marking strip	/
Others	/

##### Tool

Operating tool	/
Screwdriver	/

#### Business data

Order number	10060000759
Packing unit	720
Minimum order quantity	30
Products weight (without packaging)	4.12