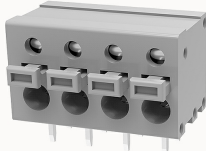


Overview

Product information



DG211R-5.0-10060000739

PCB spring terminal blocks, Rated current: 15A. Rated voltage (III/2) : 250V, pitch: 5.0mm, Color: gray, Contact surface : Tin

Product advantages

- PUSH-IN connection technology, fast wiring
- Different poles can be combined through the side lock
- Universal installation method to ensure a high degree of flexibility in device design

Product certification



Technical data

Product drawing

3D model

□

Processing notes

Process

Wave soldering/manual soldering

Connection capacity

Conductor cross section solid

0.2~1.5mm²

Conductor cross section flexible

0.2~1.5mm²

AWG

26~16AWG

Strip length

8mm

Electrical parameters UL

Rated voltage (B)

300V

Rated current (B)

8A

Electrical parameters IEC

Rated voltage	250V
Rated current	15A
Rated current(III/2)	250V
Rated surge voltage(III/2)	2KV

Item properties

Connection direction	0°
Type of installation	PCB welding
Pin arrangement	Double-row in a straight line
Connection method	Push-in spring connection
Pitch	5mm
Number of potentials	4
Pluggable or not	no
Number of rows	1

Material data

Environmental items	Compliant with REACH/RoHS
Contact material	Copper alloy
Contact point metal surface	tin-plated
Insulation Materials	PA66
Insulating material group	I
Flammability rating	UL94V-0

Mechanical tests

Test Specification	UL1059/IEC60998
--------------------	-----------------

Environmental data

Ambient temperature (operation)

-40°C~105°C

Accessories

Accessories

Coding strip

/

Bridge

/

Marking strip

/

Others

/

Tool

Operating tool

/

Screwdriver

/

Business data

Order number

10060000739

Packing unit

720

Minimum order quantity

30

Products weight (without packaging)

3.95