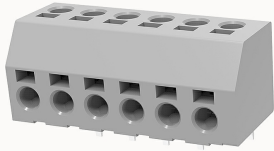


Overview

Product information



DG208-5.0-10060000707

PCB spring terminal blocks, Rated current:9A, Rated voltage (III/2) :450V, pitch:5.0mm, Color:gray, Contact surface :Tin

Product advantages

- PUSH-IN connection technology, fast wiring
- Different poles can be combined through the side lock
- Universal installation method to ensure a high degree of flexibility in device design

Product certification



Technical data

Product drawing

3D model

□

Processing notes

Process

Wave soldering/manual soldering

Connection capacity

Conductor cross section solid	0.2~0.75mm ²
Conductor cross section flexible	0.2~0.75mm ²
AWG	20~16AWG
Strip length	7mm

Electrical parameters UL

Rated voltage (B)	300V
Rated voltage (D)	300V

Rated current (B)	7A
Rated current (D)	7A

Electrical parameters IEC

Rated voltage	450V
Rated current	9A
Rated current(III/2)	450V
Rated power frequency voltage(1min)	2.5KV

Item properties

Connection direction	0°
Type of installation	PCB welding
Pin arrangement	Double-row of misalignment
Connection method	Push-in spring connection
Pitch	5mm
Number of potentials	6
Pluggable or not	no
Number of rows	1

Material data

Environmental items	Compliant with REACH/RoHS
Contact material	copper
Contact point metal surface	tin-plated
Insulation Materials	PA66
Insulating material group	I
Flammability rating	UL94V-0

Mechanical tests

Test Specification

UL1059/IEC60998

Environmental data

Ambient temperature (operation)

-40°C~105°C

Accessories

Accessories

Coding strip

/

Bridge

/

Marking strip

/

Others

/

Tool

Operating tool

/

Screwdriver

/

Business data

Order number

10060000707

Packing unit

570

Minimum order quantity

30

Products weight (without packaging)

5.34