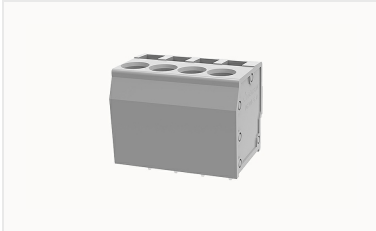


Overview

Product information



DG204-5.0-10060000665

PCB spring terminal blocks, Rated current:20A. Rated voltage (III/2) :400V, pitch:5.0mm, Color:gray, Contact surface :Tin

Product advantages

- Cage clamp connection technology, fast wiring
- Universal installation method to ensure a high degree of flexibility in device design

Product certification



Technical data

Product drawing

3D model

□

Processing notes

Process	Wave soldering/manual soldering
---------	---------------------------------

Connection capacity

Conductor cross section solid	0.2~2.5mm ²
Conductor cross section flexible	0.2~2.5mm ²
AWG	28~14AWG
Strip length	8mm

Electrical parameters UL

Rated voltage (B)	300V
Rated current (B)	12A

Electrical parameters IEC

Rated voltage	400V
Rated current(III/3)	320V
Rated current	20A
Rated current(III/2)	400V
Rated current(II/2)	630V
Rated surge voltage(III/3)	4KV
Rated surge voltage(III/2)	4KV
Rated surge voltage(II/2)	4KV

Item properties

Connection direction	90°
Type of installation	PCB welding
Pin arrangement	Single row in a straight line
Connection method	Push-in spring connection
Pitch	5mm
Number of potentials	4
Pluggable or not	no
Number of rows	1

Material data

Environmental items	Compliant with REACH/RoHS
Contact material	copper
Contact point metal surface	tin-plated
Insulation Materials	PA66
Insulating material group	I
Flammability rating	UL94V-0

Mechanical tests

Test Specification

IEC60947/UL1059

Environmental data

Ambient temperature (operation)

-40°C~105°C

Accessories

Accessories

Coding strip

/

Bridge

/

Marking strip

/

Others

/

Tool

Operating tool

/

Screwdriver

/

Business data

Order number

10060000665

Packing unit

610

Minimum order quantity

30

Products weight (without packaging)

5.57