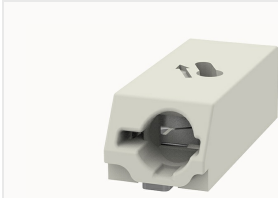


Overview

Product information



DG2003-6.0-10060000597

PCB spring terminal blocks, Rated current: 17.5A. Rated voltage (III/2) : 200V, pitch: 6.0mm, Color: White, Contact surface : Tin

Product advantages

- PUSH-IN connection technology, fast wiring
- Suitable for SMT welding process
- Compact structure, saving installation space

Product certification



Technical data

Product drawing

3D model

□

Processing notes

Process	Reflow soldering/wave soldering/manual soldering
---------	--

Connection capacity

Conductor cross section solid	0.5~1.5mm ²
Conductor cross section flexible	0.5~1.5mm ²
AWG	20~16AWG
Strip length	10mm

Electrical parameters UL

Rated voltage (B)	300V
Rated current (B)	10A

Electrical parameters IEC

Rated voltage	200V
Rated current(III/3)	200V
Rated current	17.5A
Rated current(III/2)	200V
Rated current(II/2)	320V
Rated surge voltage(III/3)	4KV
Rated surge voltage(III/2)	4KV
Rated surge voltage(II/2)	4KV

Item properties

Connection direction	0°
Type of installation	PCB welding
Pin arrangement	Double-row in a straight line
Connection method	Push-in spring connection
Pitch	6mm
Number of potentials	1
Pluggable or not	no
Number of rows	1

Material data

Environmental items	Compliant with REACH/RoHS
Contact material	Copper alloy
Contact point metal surface	tin-plated
Insulation Materials	High temperature resistant materials
Insulating material group	IIIa

Flammability rating	UL94V-0
---------------------	---------

Mechanical tests

Test Specification	IEC60947/UL1977
--------------------	-----------------

Environmental data

Ambient temperature (operation)	-40°C~130°C
---------------------------------	-------------

Accessories

Accessories

Coding strip	/
Bridge	/
Marking strip	/
Others	/

Tool

Operating tool	/
Screwdriver	/

Business data

Order number	10060000597
Packing unit	900
Minimum order quantity	30
Products weight (without packaging)	1