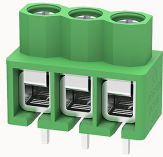


Overview

Product information



DG166-5.0-10050000353

PCB terminal blocks, Rated current: 22A, Rated voltage (III/2) 250V, Cross section: 2.5mm², pitch: 5.0mm, connector method: screw connector with wire protection, Color: green, Contact surface: Tin

Product advantages

- Fixed screw connection technology, safe and reliable
- Square wiring hole, large wiring capacity
- Universal installation method to ensure a high degree of flexibility in device design

Product certification



Technical data

Product drawing

3D model

□

Processing notes

Process

Wave soldering/manual soldering

Connection capacity

Conductor cross section solid	1.0~2.5mm ²
Conductor cross section flexible	1.0~2.5mm ²
AWG	22~12AWG
Torque	0.5N.m
Strip length	7mm

Electrical parameters UL

Rated voltage (B)	300V
Rated voltage (D)	300V
Rated current (B)	15A
Rated current (D)	10A

Electrical parameters IEC

Rated voltage	250V
Rated current	22A
Rated current(III/2)	250V
Rated surge voltage(III/2)	2KV

Item properties

Connection direction	0°
Type of installation	PCB welding
Pin arrangement	Single row in a straight line
Connection method	Screw connection with wire protection
Screwdriver	Slotted screwdriver
screw thread	M3
Pitch	5mm
Number of potentials	3
Pluggable or not	no
Number of rows	1

Material data

Environmental items	Compliant with REACH/RoHS
Contact material	Copper alloy
Contact point metal surface	tin-plated
Insulation Materials	PA66

Insulating material group	I
Flammability rating	UL94V-0

Mechanical tests

Test Specification	UL1059/IEC60998
--------------------	-----------------

Environmental data

Ambient temperature (operation)	-40°C~105°C
---------------------------------	-------------

Accessories

Accessories

Coding strip	/
Bridge	DG019-5.0
Marking strip	/
Others	/

Tool

Operating tool	/
Screwdriver	0.6x3.5mm, Slotted screwdriver

Business data

Order number	10050000353
Packing unit	200
Minimum order quantity	30
Products weight (without packaging)	3.345