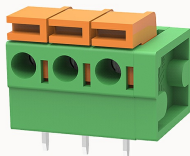


Overview

Product information



DG142R-5.08-10060000453

PCB spring terminal blocks, Rated current: 15A. Rated voltage (III/2) : 250V, pitch: 5.08mm, Color: green, Contact surface : Tin

Product advantages

- PUSH-IN connection technology, fast wiring
- Different poles can be combined through the side lock
- Universal installation method to ensure a high degree of flexibility in device design

Product certification



Technical data

Product drawing

3D model

□

Processing notes

Process

Wave soldering/manual soldering

Connection capacity

Conductor cross section solid

0.2~1.5mm²

Conductor cross section flexible

0.2~1.5mm²

AWG

22~16AWG

Strip length

10mm

Electrical parameters UL

Rated voltage (B)

300V

Rated voltage (C)

300V

Rated voltage (D)	300V
Rated current (B)	10A
Rated current (D)	10A
Rated current (C)	10A

Electrical parameters IEC

Rated voltage	250V
Rated current	15A
Rated current(III/2)	250V
Rated surge voltage(III/2)	2KV

Item properties

Connection direction	0°
Type of installation	PCB welding
Pin arrangement	Double-row in a straight line
Connection method	Push-in spring connection
Pitch	5.08mm
Number of potentials	3
Pluggable or not	no
Number of rows	1

Material data

Environmental items	Compliant with REACH/RoHS
Contact material	Copper alloy
Contact point metal surface	tin-plated
Insulation Materials	PA66
Insulating material group	I

Flammability rating	UL94V-0
---------------------	---------

Mechanical tests

Test Specification	UL1059/IEC60998
--------------------	-----------------

Environmental data

Ambient temperature (operation)	-40°C~105°C
---------------------------------	-------------

Accessories

Accessories

Coding strip	/
Bridge	/
Marking strip	/
Others	/

Tool

Operating tool	/
Screwdriver	/

Business data

Order number	10060000453
Packing unit	850
Minimum order quantity	30
Products weight (without packaging)	3.37