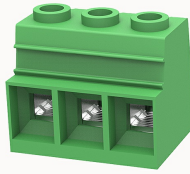


Overview

Product information



DG137T-15.0-10040002015

PCB terminal blocks, Rated current: 115A, Rated voltage (III/2) 1000V, Cross section: 4-35mm², pitch: 15.0mm, connector method: Screw connector with tension sleeve, Color: green, Contact surface : Tin

Product advantages

- Fixed screw connection technology, reliable wiring
- Universal installation method to ensure a high degree of flexibility in device design
- Double solder pins reduce mechanical stress on the solder joints

Product certification



Technical data

Product drawing

3D model

□

Processing notes

Process

Wave soldering/manual soldering

Connection capacity

Conductor cross section solid	4.0~35mm ²
Conductor cross section flexible	4.0~35mm ²
AWG	20~2AWG
Torque	2N.m
Strip length	18mm

Electrical parameters UL

Rated voltage (B)	600V
Rated voltage (C)	600V
Rated voltage (D)	600V
Rated current (B)	115A
Rated current (D)	5A
Rated current (C)	115A

Electrical parameters IEC

Rated voltage	1000V
Rated current	115A
Rated current(III/2)	1000V
Rated power frequency voltage(1min)	3.5KV

Item properties

Connection direction	0°
Type of installation	PCB welding
Pin arrangement	Double-row in a straight line
Connection method	Screw connection
Screwdriver	slotted-phillips screwdriver
screw thread	M5
Pitch	15mm
Number of potentials	3
Pluggable or not	no
Number of rows	1

Material data

Environmental items	Compliant with REACH/RoHS
Contact material	copper

Contact point metal surface	tin-plated
Insulation Materials	PA66
Insulating material group	I
Flammability rating	UL94V-0

Mechanical tests

Test Specification	UL1059/IEC60998
--------------------	-----------------

Environmental data

Ambient temperature (operation)	-40°C~105°C
---------------------------------	-------------

Accessories

Accessories

Coding strip	/
Bridge	/
Marking strip	/
Others	/

Tool

Operating tool	/
Screwdriver	Cross recessed screwdriver

Business data

Order number	10040002015
Packing unit	65
Minimum order quantity	30
Products weight (without packaging)	62.05

