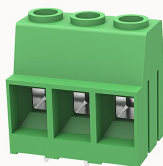


## Overview

### Product information



## DG136HT-10.16-10040001959

PCB terminal blocks, Rated current: 65A, Rated voltage (III/2) 1000V, Cross section: 2.5-16mm<sup>2</sup>, pitch: 10.16mm, connector method: Screw connector with tension sleeve, Color: green, Contact surface : Tin

### Product advantages

- Universal installation method to ensure a high degree of flexibility in device design
- Different poles can be combined through the side lock

### Product certification



## Technical data

### Product drawing

### 3D model

□

### Processing notes

Process

Wave soldering/manual soldering

### Connection capacity

Conductor cross section solid	2.5~16mm <sup>2</sup>
Conductor cross section flexible	2.5~16mm <sup>2</sup>
AWG	20~6AWG
Torque	1.2N.m
Strip length	10mm

### Electrical parameters UL

Rated voltage (B)	300V
Rated voltage (C)	300V
Rated voltage (D)	300V
Rated current (B)	60A
Rated current (D)	10A
Rated current (C)	60A

#### Electrical parameters IEC

Rated voltage	1000V
Rated current	65A
Rated current(III/2)	1000V
Rated power frequency voltage(1min)	3.5KV

#### Item properties

Connection direction	0°
Type of installation	PCB welding
Pin arrangement	Double-row in a straight line
Connection method	Screw connection
Screwdriver	Slotted screwdriver
screw thread	M4
Pitch	10.16mm
Number of potentials	3
Pluggable or not	no
Number of rows	1

#### Material data

Environmental items	Compliant with REACH/RoHS
Contact material	copper

Contact point metal surface	tin-plated
Insulation Materials	PA66
Insulating material group	I
Flammability rating	UL94V-0

#### Mechanical tests

Test Specification	UL1059/IEC60998
--------------------	-----------------

#### Environmental data

Ambient temperature (operation)	-40°C~105°C
---------------------------------	-------------

### Accessories

#### Accessories

Coding strip	/
Bridge	/
Marking strip	/
Others	/

#### Tool

Operating tool	/
Screwdriver	0.6x3.5mm, Slotted screwdriver

### Business data

Order number	10040001959
Packing unit	130
Minimum order quantity	30
Products weight (without packaging)	23.58

