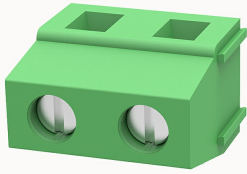


## Overview

### Product information



## DG128R-7.5-10040001643

PCB terminal blocks, Rated current: 18A, Rated voltage (III/2) 450V, Cross section: 1.0-2.5mm<sup>2</sup>, pitch: 7.5mm, connector method: Screw connector with tension sleeve, Color: green, Contact surface : Tin

### Product advantages

- Universal installation method to ensure a high degree of flexibility in device design
- Different poles can be combined through the side lock

### Product certification



## Technical data

### Product drawing

### 3D model

□

### Processing notes

Process

Wave soldering/manual soldering

### Connection capacity

|                                  |                        |
|----------------------------------|------------------------|
| Conductor cross section solid    | 1.0~2.5mm <sup>2</sup> |
| Conductor cross section flexible | 1.0~2.5mm <sup>2</sup> |
| AWG                              | 30~12AWG               |
| Torque                           | 0.4N.m                 |
| Strip length                     | 6mm                    |

### Electrical parameters UL

|                   |      |
|-------------------|------|
| Rated voltage (B) | 300V |
| Rated voltage (D) | 300V |
| Rated current (B) | 20A  |
| Rated current (D) | 10A  |

#### Electrical parameters IEC

|                                     |       |
|-------------------------------------|-------|
| Rated voltage                       | 450V  |
| Rated current                       | 18A   |
| Rated current(III/2)                | 450V  |
| Rated power frequency voltage(1min) | 2.5KV |

#### Item properties

|                      |                               |
|----------------------|-------------------------------|
| Connection direction | 90°                           |
| Type of installation | PCB welding                   |
| Pin arrangement      | Single row in a straight line |
| Connection method    | Screw connection              |
| Screwdriver          | Slotted screwdriver           |
| screw thread         | M2.5                          |
| Pitch                | 7.5mm                         |
| Number of potentials | 2                             |
| Pluggable or not     | no                            |
| Number of rows       | 1                             |

#### Material data

|                             |                           |
|-----------------------------|---------------------------|
| Environmental items         | Compliant with REACH/RoHS |
| Contact material            | Copper alloy              |
| Contact point metal surface | tin-plated                |
| Insulation Materials        | PA66                      |

|                           |         |
|---------------------------|---------|
| Insulating material group | I       |
| Flammability rating       | UL94V-0 |

**Mechanical tests**

|                    |                 |
|--------------------|-----------------|
| Test Specification | UL1059/IEC60998 |
|--------------------|-----------------|

**Environmental data**

|                                 |             |
|---------------------------------|-------------|
| Ambient temperature (operation) | -40°C~105°C |
|---------------------------------|-------------|

**Accessories**

**Accessories**

|               |   |
|---------------|---|
| Coding strip  | / |
| Bridge        | / |
| Marking strip | / |
| Others        | / |

**Tool**

|                |                                |
|----------------|--------------------------------|
| Operating tool | /                              |
| Screwdriver    | 0.6x3.5mm, Slotted screwdriver |

**Business data**

|                                     |             |
|-------------------------------------|-------------|
| Order number                        | 10040001643 |
| Packing unit                        | 200         |
| Minimum order quantity              | 30          |
| Products weight (without packaging) | 3.09        |